



# DISTRICT HEATING

## DISTRICT HEATING SYSTEMS

DISTRICT HEATING IS A SYSTEM FOR DISTRIBUTING HEAT GENERATED IN A CENTRALIZED LOCATION THROUGH A SYSTEM OF INSULATED PIPES FOR RESIDENTIAL AND COMMERCIAL HEATING REQUIREMENTS SUCH AS SPACE HEATING AND WATER HEATING. THE HEAT IS OFTEN OBTAINED FROM A COGENERATION PLANT BURNING FOSSIL FUELS OR BIOMASS, BUT HEAT-ONLY BOILER STATIONS, GEOTHERMAL HEATING, HEAT PUMPS AND CENTRAL SOLAR HEATING ARE ALSO USED, AS WELL AS HEAT WASTE FROM NUCLEAR POWER ELECTRICITY GENERATION. CHROMALOX ELECTRIC STEAM/HOT WATER GENERATORS CAN PROVIDE HIGHER EFFICIENCIES AND ARE NET ZERO PRODUCTS. ACCORDING TO SOME RESEARCH, DISTRICT HEATING WITH COMBINED HEAT AND POWER IS THE CHEAPEST METHOD OF CUTTING CARBON EMISSION<sup>1</sup>.

<sup>1</sup> DAVE ANDREWS, [HTTPS://CLAVERTON-ENERGY.COM/CARBON-FOOTPRINTS-OF-VARIOUS-SOURCES-OF-HEAT-CHP-DH-COMES-OUT-LOWEST.HTML](https://claverton-energy.com/carbon-footprints-of-various-sources-of-heat-chp-dh-comes-out-lowest.html)

## PRODUCING HEAT WHILE HELPING ATTAIN YOUR NET ZERO GOALS

### THE CHROMALOX DIFFERENCE

Chromalox offers safe, proven, and sustainable products for the building and construction market. With thousands of products in stock and ready to ship, we can provide the perfect solution for your application. Our applications engineering team stands ready to help design a system that meets your specification, code approval, cost and installation schedule needs.

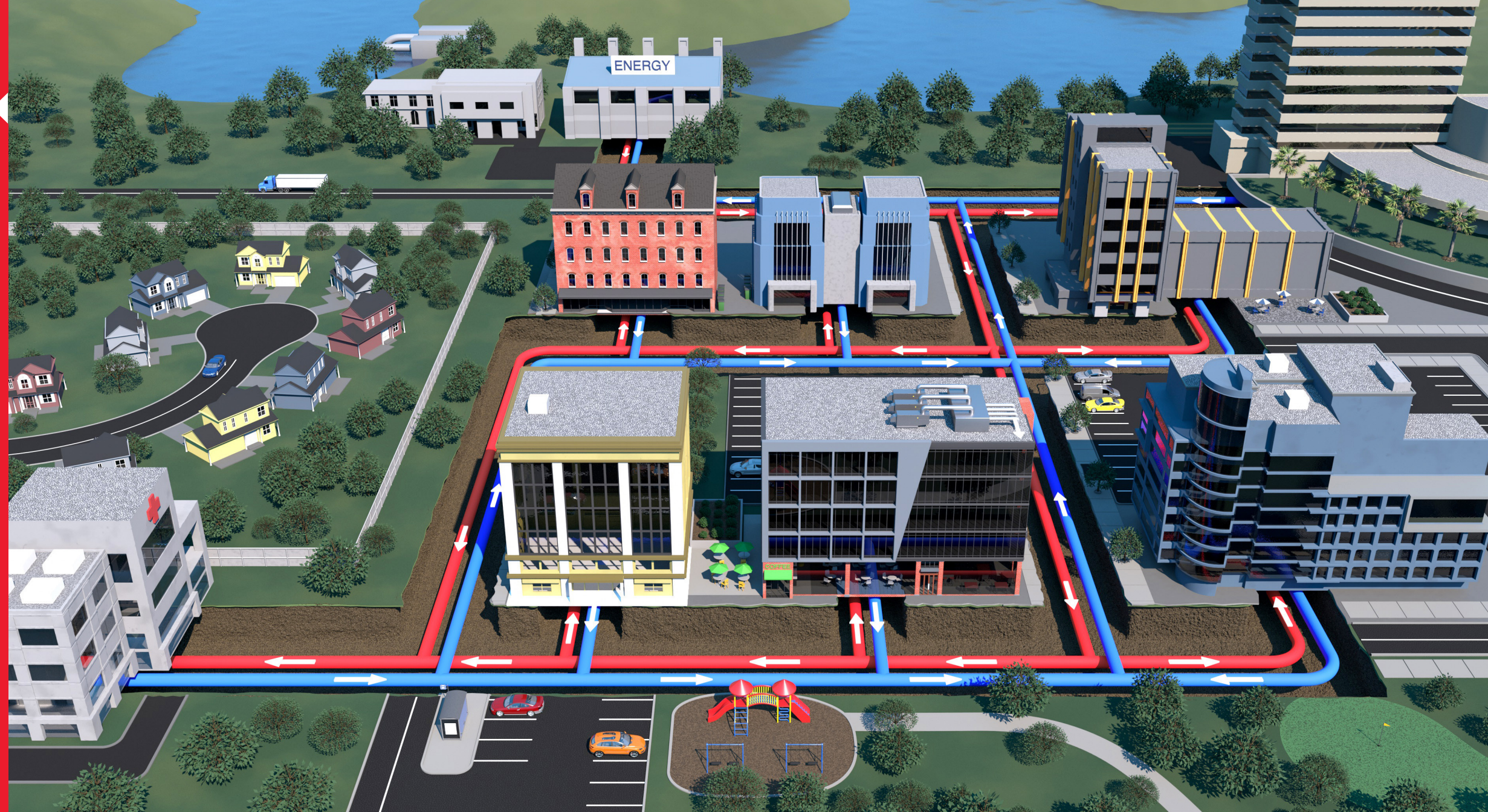
Our domestically manufactured products are designed to minimize your carbon footprint while providing the heat needed. Our controllers provide monitoring and communication of the system to your building management system and provide years of trouble free, net zero heating to your facilities.

At Chromalox, our focus is on solving customer's problems quickly and economically, minimizing energy usage and maximizing the useful life of the system.



# DISTRICT HEATING WITH CHROMALOX MV TECHNOLOGY

Chromalox DirectConnect process heaters and boilers utilizing medium voltage technology drastically reduce installation, operation, and maintenance costs for process heating and steam boiler applications. Medium voltage systems are engineered to provide precise control and are designed to operate for many years in service at voltages up to 7200 V. For the first time in history, the benefits of electric metal sheath element steam boilers are merged with the advantages of medium voltage operation. Since these units are electric they operate at virtually 100% efficiency and are a zero emissions product.



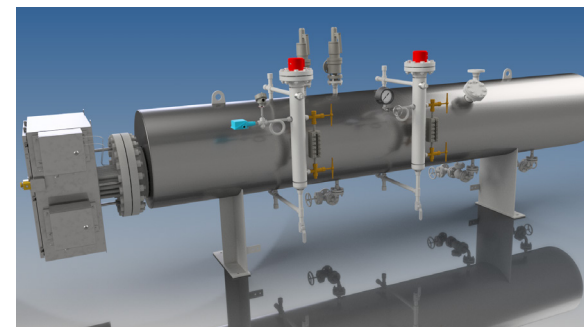
- Eliminates on site Scope 1 Emissions
- Eliminates Scope 2 Emissions when coupled with renewable power
- Drastically reduces maintenance costs & downtime
- Virtually 100% efficient conversion of energy to usable heat
- Removes complexity and cost of combustion sources
- Significant savings in life cycle costs

## MEDIUM VOLTAGE TECHNOLOGY

HEAT TRANSFER SYSTEMS



HOT WATER/STEAM GENERATORS



POWER CONTROL ASSEMBLIES



# CHROMALOX BUILDING & CONSTRUCTION REPS



## Organization

Applied Thermal  
Admiral Distribution  
Balfrey & Johnston, Inc.  
Barclay Sales  
Chicago Steam & Hydronics  
Chromalox  
Coleman Russell Associates  
Daybreak Technologies  
Faber Industrial Technologies  
Focus Electrical Sales  
Frontline Sales & Marketing  
Johnson & White Sales Company  
Liberty Electrical Sales  
Marshall Rodeno  
Midwest Spec  
New England Sales Group  
Provan  
Raptor Associates  
Specified Sales Associates  
Strayton & Associates  
Volco Company

## Website

[www.appliedthermal.com](http://www.appliedthermal.com)  
[www.admiraldistribution.com](http://www.admiraldistribution.com)  
[www.balfrey-johnston.com](http://www.balfrey-johnston.com)  
[www.barclaysales.com](http://www.barclaysales.com)  
[www.chicagosteam.net](http://www.chicagosteam.net)  
[www.chromalox.com](http://www.chromalox.com)  
[www.colemanrussell.com](http://www.colemanrussell.com)  
[www.daybreak.com](http://www.daybreak.com)  
[www.faberinc.com](http://www.faberinc.com)  
[www.focuselectrical.com](http://www.focuselectrical.com)  
[www.fsm-rep.com](http://www.fsm-rep.com)  
[www.johnsonwhitesales.com](http://www.johnsonwhitesales.com)  
[www.libertyelectricsales.com](http://www.libertyelectricsales.com)  
[www.marshallrodeno.com](http://www.marshallrodeno.com)  
[www.mwspec.com](http://www.mwspec.com)  
[www.newenglandsalesgroup.com](http://www.newenglandsalesgroup.com)  
[www.provan.ca](http://www.provan.ca)  
[www.raptorassoc.com](http://www.raptorassoc.com)  
[www.ssafila.ca](http://www.ssafila.ca)  
[www.heattracingsales.com](http://www.heattracingsales.com)  
[www.volco.net](http://www.volco.net)

## Phone

(800) 733-8826  
(713) 202-2714  
(313) 864-2800  
(780) 443-0044  
(708) 448-6459  
(800) 443-2640  
(205) 833-0700  
(702) 451-9335  
(973) 546-7900  
(506) 852-9933  
(206) 488-8885  
(800) 823-9052  
(315) 437-8100  
(303) 575-6701  
(440) 944-7500  
(860) 930-1253  
(800) 361-3370  
(757) 477-3813  
(407) 208-2888  
(410) 795-2223  
(952) 933-6631

