



POWER TO HEAT

**CONVERTING RENEWABLE ENERGY AND EXCESS GRID
POWER INTO HEAT WITH DIRECTCONNECT™ TECHNOLOGY**



ASSURING YOUR PROCESS PERFORMANCE WITH CHROMALOX

The Chromalox Difference

When it comes to applying and controlling heat for process industries, some companies act as suppliers who only provide equipment. Our approach is to be a partner—dedicated to providing you with the best electric thermal solutions for your processes and applications. A partner who solves even the most demanding and complex heating and process control challenges. A partner who can meet your high expectations with solutions designed to exceed specifications, limit risk, operate within a defined budget. A partner who can provide sustainable solutions that can be installed efficiently and require minimal design iterations.

Power to Heat Utilizing Electric Heat

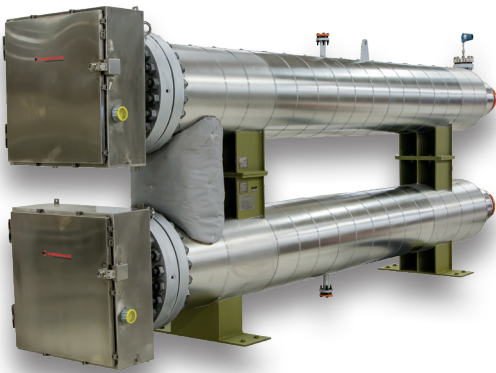
A Chromalox Power to Heat System allows a user to convert excess electrical energy into stored heat for later use. Excess electrical energy may be readily available from unbalanced renewable energy supply, such as a wind turbine or solar farms. Excess energy may also be economically converted into heat through advantageous pricing agreements with traditional energy suppliers during off-peak hours. Such stored heat energy can then be used for building temperature maintenance or manufacturing process heating needs at a fraction of the cost.

The Chromalox Advantage

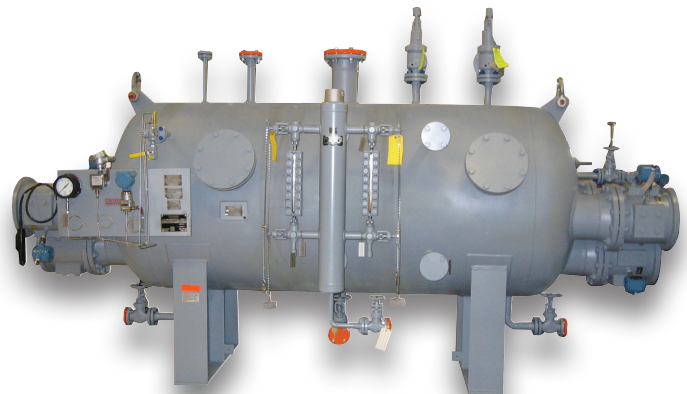
A Chromalox Power to Heat System can operate at voltages ranging from 120 V to 7200 V. Utilizing a higher voltage allows the installation of large heating systems to be accomplished with minimal cost and space-saving design compared to low voltage. Chromalox heaters are available with a wide variety of options and can be built to meet most third-party requirements. Chromalox manufactures all component parts of our heat and control systems. This means that we can custom design any system to meet your unique application needs and provide for a quick delivery.

Our Scope

Chromalox heat and control systems are designed to be integrated into a heat energy storage system. Our heaters efficiently transfer excess power from the grid into stored heat, while the control panel continuously monitors the circulating fluid temperature and power input. Each system can be designed to work over a multitude of voltage and frequency ranges.



4160V, 2400 kW Thermal Fluid Heater



690V, 1900 kW Steam Generator



6600V, 2800 KW Water Heating System



6900V, 1800KW MV Converter System

Let Chromalox's century of experience and innovation deliver your sustainable goals for tomorrow with Power to Heat solutions.

CHROMALOX WORLDWIDE LOCATIONS



- Sales Offices
- Manufacturing Facilities

Chromalox Headquarters

103 Gamma Drive
Pittsburgh, PA 15238
USA

Phone: (412) 967-3800
Fax: (412) 967-5148
Toll-Free: 1-800-443-2640

email: sales@chromalox.com
www: www.chromalox.com

Canada

Tel: 877-238-4754
Fax: 888-292-9607

email: sales@chromalox.com
www: www.chromalox.com

China

Tel: +86 (0) 21-5866-8802
Fax: +86 (0) 21-5866-8803

email: shanghai.office@chromalox.com
www: www.chromalox.cn

France

Tel: +33 (0) 3 23 74 39 39
Fax: +33 (0) 3 23 74 39 00

email: ventes@chromalox.fr
www: www.chromalox.fr

Germany

Tel: +49 (0) 231-58 44 990-0
Fax: +49 (0) 231-58 44 990-9

email: Kontakt@chromalox.com
www: www.chromalox.de

Middle East

Tel: +971 4 8879776
Fax: +971 4 8879793

email: middle-eastsales@chromalox.com
www: www.chromalox.com

India

Tel: +91-11-25623134
Fax: +91-11-25623480

email: indiasales@chromalox.com
www: www.chromalox.in

Singapore

Tel: +65 (0) 6339 1228
Fax: +65 (0) 6339 2648

email: singaporesales@chromalox.com
www: www.chromalox.com

Thailand

Tel: +66 (0) 38 190916
Fax: +66 (0) 38 190919

email: asiasales@chromalox.com
www: www.chromalox.com

UK

Tel: +44 (0) 20 8665 8900
Fax: +44 (0) 20 8689 0571

email: uksales@chromalox.com
www: www.chromalox.co.uk

