

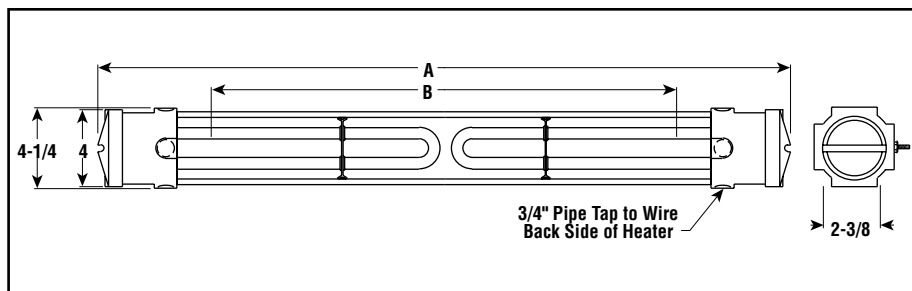
## U-RAD-LT

### Liquid-Tight, Double-Hairpin Element Radiant Heater



- 3.66 kW/Ft<sup>2</sup>
- 1.6 - 7.2 kW
- 120, 208, 240, 275 and 480 Volt
- 3/8" Dia. INCOLOY® Sheath Elements (type UTU-LT)
- 1500°F Max. Sheath Temp.

*Dimensions (Inches)*



#### Applications

- Food Processing
- Water Intake Screens (See Installation Manual for Limitations)
- Conveyor Belt Heating
- Outdoor Comfort Heating
- Facilities Washdown Operations (See Installation Manual for Limitations)
- Winter Applications where element needs to be shielded from strong drafts and wind

#### Features

**Complete, Ready-to-Install** and connect assembly.

**Movable Mounting Clamps and Bolts** are supplied to accommodate many mounting configurations such as banks, tunnels and oven sections.

#### Specifications and Ordering Information

kW	Volts	Length (In.)		Model	Stock	PCN	Optional Grille <sup>2</sup>	Replacement Elements <sup>1</sup>	Wt. (Lbs.)
		Overall A	Heated B						
1.6	120	26-1/8	16-5/8	U-RAD-22LT	NS	119263	(1) GR-2	(2) UTU-2LT	14
1.6	208	26-1/8	16-5/8	U-RAD-22VLT	NS	119280	(1) GR-2	(2) UTU-2VLT	14
1.6	240	26-1/8	16-5/8	U-RAD-22LT	NS	119271	(1) GR-2	(2) UTU-2LT	14
1.6	275	26-1/8	16-5/8	U-RAD-22VLT	NS	119298	(1) GR-2	(2) UTU-2VLT	14
1.9	120	29-1/4	19-3/4	U-RAD-32LT	NS	119300	(1) GR-2	(1) UTU-3LT, (1) UTU-2LT	15
1.9	208	29-1/4	19-3/4	U-RAD-32VLT	NS	119327	(1) GR-2	(1) UTU-3VLT, (1) UTU-2VLT	15
1.9	240	29-1/4	19-3/4	U-RAD-32LT	NS	119319	(1) GR-2	(1) UTU-3LT, (1) UTU-2LT	15
1.9	275	29-1/4	19-3/4	U-RAD-32VLT	NS	119335	(1) GR-2	(1) UTU-3VLT, (1) UTU-2VLT	15
2.2	120	32-3/8	22-7/8	U-RAD-33LT	NS	119343	(1) GR-3	(2) UTU-3LT	16
2.2	208	32-3/8	22-7/8	U-RAD-33VLT	NS	119360	(1) GR-3	(2) UTU-3VLT	16
2.2	240	32-3/8	22-7/8	U-RAD-33LT	NS	119351	(1) GR-3	(2) UTU-3LT	16
2.2	275	32-3/8	22-7/8	U-RAD-33VLT	NS	119378	(1) GR-3	(2) UTU-3VLT	16
2.6	208	37-1/8	27-11/16	U-RAD-42VLT	NS	119394	(1) GR-3	(1) UTU-2VLT, (1) UTU-4VLT	17
2.6	240	37-1/8	27-11/16	U-RAD-42LT	NS	119386	(1) GR-3	(1) UTU-2LT, (1) UTU-4LT	17
2.6	275	37-1/8	27-11/16	U-RAD-42VLT	NS	119407	(1) GR-3	(1) UTU-2VLT, (1) UTU-4VLT	17
2.9	208	40-1/4	30-13/16	U-RAD-43VLT	NS	119423	(2) GR-2	(1) UTU-3VLT, (1) UTU-4VLT	18
2.9	240	40-1/4	30-13/16	U-RAD-43LT	NS	119415	(2) GR-2	(1) UTU-3LT, (1) UTU-4LT	18
2.9	275	40-1/4	30-13/16	U-RAD-43VLT	NS	119431	(2) GR-2	(1) UTU-3VLT, (1) UTU-4VLT	18
3.6	208	48-1/8	38-11/16	U-RAD-44VLT	NS	119466	(1) GR-4	(2) UTU-4VLT	20
3.6	240	48-1/8	38-11/16	U-RAD-44LT	NS	119440	(1) GR-4	(2) UTU-4LT	20
3.6	275	48-1/8	38-11/16	U-RAD-44VLT	NS	119474	(1) GR-4	(2) UTU-4VLT	20
3.6	480	48-1/8	38-11/16	U-RAD-44LT	NS	119458	(1) GR-4	(2) UTU-4LT	20

**Process Temperature Control** — Radiant heater output may be controlled with Chromalox SCR Power Controllers, Percentage Timing Input Controls and Non-Contact Temperature Sensors. See the Controls section of this catalog.

**Power Connections** are made at both ends, using high-temperature wire.

#### Accessories

**Protective Grille** — Optional snap-in sections help protect personnel and work from contact with hot elements.

**Special Protective Terminal Cover** provides liquid-tight protection to terminals.

#### Construction

**Liquid-Tight Terminal Enclosure** for outdoor or hose-down locations.

**Enclosed Chromalox Alloy-Sheath Tubular Heating Element** is completely isolated and supported on secondary insulation for improved electrical safety. Designed for long life, the element is more resistant to hard blows than quartz lamp or tube and open coil types. Elements include bulkhead threaded fittings to ensure a water-tight seal.

**Rigid Extruded Aluminum Housing** protects heating element from harsh industrial environments.

**Highly Polished Aluminum Reflectors** give good reflectivity and heat transfer, and are easily cleaned to maintain energy efficiency.

## U-RAD-LT

### Liquid-Tight, Double-Hairpin Element Radiant Heater (cont'd.)

#### Specifications and Ordering Information

kW	Volts	Length (In.)		Model	Stock	PCN	Optional Grille <sup>2</sup>	Replacement Elements <sup>1</sup>	Wt. (Lbs.)
		Overall A	Heated B						
3.3	208	44-5/8	35-1/8	U-RAD-52VLT	NS	119490	(2) GR-2	(1) UTU-2VLT, (1) UTU-5VLT	18
3.3	240	44-5/8	35-1/8	U-RAD-52LT	NS	119482	(2) GR-2	(1) UTU-2LT, (1) UTU-5LT	18
3.3	275	44-5/8	35-1/8	U-RAD-52VLT	NS	119503	(2) GR-2	(1) UTU-2VLT, (1) UTU-5VLT	18
3.6	208	47-3/4	38-1/4	U-RAD-53VLT	NS	119520	(1) GR-4	(1) UTU-3VLT, (1) UTU-5VLT	19
3.6	240	47-3/4	38-1/4	U-RAD-53LT	NS	119511	(1) GR-4	(1) UTU-3LT, (1) UTU-5LT	19
3.6	275	47-3/4	38-1/4	U-RAD-53VLT	NS	119538	(1) GR-4	(1) UTU-3VLT, (1) UTU-5VLT	19
4.3	208	55-5/8	46-3/16	U-RAD-54VLT	NS	119562	(3) GR-2	(1) UTU-4VLT, (1) UTU-5VLT	21
4.3	240	55-5/8	46-3/16	U-RAD-54LT	NS	119546	(3) GR-2	(1) UTU-4LT, (1) UTU-5LT	21
4.3	275	55-5/8	46-3/16	U-RAD-54VLT	NS	119570	(3) GR-2	(1) UTU-4VLT, (1) UTU-5VLT	21
4.3	480	55-5/8	46-3/16	U-RAD-54LT	NS	119554	(3) GR-2	(1) UTU-4LT, (1) UTU-5LT	21
5	208	63-1/8	53-9/16	U-RAD-55VLT	NS	119600	(1) GR-5	(2) UTU-5VLT	22
5	240	63-1/8	53-9/16	U-RAD-55LT	NS	119589	(1) GR-5	(2) UTU-5LT	22
5	275	63-1/8	53-9/16	U-RAD-55VLT	NS	119597	(1) GR-5	(2) UTU-5VLT	22
5	480	63-1/8	53-9/16	U-RAD-55LT	NS	119618	(1) GR-5	(2) UTU-5LT	22
3.8	208	50-9/16	41-1/8	U-RAD-62VLT	NS	119634	(1) GR-2, (1) GR-3	(1) UTU-2VLT, (1) UTU-6VLT	20
3.8	240	50-9/16	41-1/8	U-RAD-62LT	NS	119626	(1) GR-2, (1) GR-3	(1) UTU-2LT, (1) UTU-6LT	20
3.8	275	50-9/16	41-1/8	U-RAD-62VLT	NS	119642	(1) GR-2, (1) GR-3	(1) UTU-2VLT, (1) UTU-6VLT	20
4.1	208	53-11/16	44-1/4	U-RAD-63VLT	NS	119669	(2) GR-3	(1) UTU-3VLT, (1) UTU-6VLT	21
4.1	240	53-11/16	44-1/4	U-RAD-63LT	NS	119650	(2) GR-3	(1) UTU-3LT, (1) UTU-6LT	21
4.1	275	53-11/16	44-1/4	U-RAD-63VLT	NS	119677	(2) GR-3	(1) UTU-3VLT, (1) UTU-6VLT	21
4.8	208	61-9/16	52-3/16	U-RAD-64VLT	NS	119706	(1) GR-5	(1) UTU-4VLT, (1) UTU-6VLT	23
4.8	240	61-9/16	52-3/16	U-RAD-64LT	NS	119685	(1) GR-5	(1) UTU-4LT, (1) UTU-6LT	23
4.8	275	61-9/16	52-3/16	U-RAD-64VLT	NS	119714	(1) GR-5	(1) UTU-4VLT, (1) UTU-6VLT	23
4.8	480	61-9/16	52-3/16	U-RAD-64LT	NS	119693	(1) GR-5	(1) UTU-4LT, (1) UTU-6LT	23
5.5	208	69-1/16	59-5/8	U-RAD-65VLT	NS	119749	(1) GR-3, (1) GR-4	(1) UTU-5VLT, (1) UTU-6VLT	24
5.5	240	69-1/16	59-5/8	U-RAD-65LT	NS	119722	(1) GR-3, (1) GR-4	(1) UTU-5LT, (1) UTU-6LT	24
5.5	275	69-1/16	59-5/8	U-RAD-65VLT	NS	119757	(1) GR-3, (1) GR-4	(1) UTU-5VLT, (1) UTU-6VLT	24
5.5	480	69-1/16	59-5/8	U-RAD-65LT	NS	119730	(1) GR-3, (1) GR-4	(1) UTU-5-LT, (1) UTU-6LT	24
6	208	75	65-5/8	U-RAD-66VLT	NS	119781	(1) GR-6	(2) UTU-6VLT	26
6	240	75	65-5/8	U-RAD-66LT	NS	119765	(1) GR-6	(2) UTU-6LT	26
6	275	75	65-5/8	U-RAD-66VLT	NS	119790	(1) GR-6	(2) UTU-6VLT	26
6	480	75	65-5/8	U-RAD-66LT	NS	119773	(1) GR-6	(2) UTU-6LT	26
4.4	208	56-11/16	47-1/4	U-RAD-72VLT	NS	119810	(1) GR-2, (1) GR-4	(1) UTU-2VLT, (1) UTU-7VLT	22
4.4	240	56-11/16	47-1/4	U-RAD-72LT	NS	119802	(1) GR-2, (1) GR-4	(1) UTU-2LT, (1) UTU-7LT	22
4.4	275	56-11/16	47-1/4	U-RAD-72VLT	NS	119829	(1) GR-2, (1) GR-4	(1) UTU-2VLT, (1) UTU-7VLT	22
4.7	208	59-13/16	50-3/8	U-RAD-73VLT	NS	119845	(3) GR-2	(1) UTU-3VLT, (1) UTU-7VLT	23
4.7	240	59-13/16	50-3/8	U-RAD-73LT	NS	119837	(3) GR-2	(1) UTU-3LT, (1) UTU-7LT	23
4.7	275	59-13/16	50-3/8	U-RAD-73VLT	NS	119853	(3) GR-2	(1) UTU-3VLT, (1) UTU-7VLT	23
5.4	208	67-11/16	58-1/4	U-RAD-74VLT	NS	119888	(1) GR-2, (1) GR-4	(1) UTU-4VLT, (1) UTU-7VLT	25
5.4	240	67-11/16	58-1/4	U-RAD-74LT	NS	119861	(1) GR-2, (1) GR-4	(1) UTU-4LT, (1) UTU-7LT	25
5.4	275	67-11/16	58-1/4	U-RAD-74VLT	NS	119896	(1) GR-2, (1) GR-4	(1) UTU-4VLT, (1) UTU-7VLT	25
5.4	480	67-11/16	58-1/4	U-RAD-74LT	NS	119870	(1) GR-2, (1) GR-4	(1) UTU-4LT, (1) UTU-7LT	25
6.1	208	75-3/16	65-5/8	U-RAD-75VLT	NS	119925	(1) GR-6	(1) UTU-5VLT, (1) UTU-7VLT	26
6.1	240	75-3/16	65-5/8	U-RAD-75LT	NS	119909	(1) GR-6	(1) UTU-5LT, (1) UTU-7LT	26
6.1	275	75-3/16	65-5/8	U-RAD-75VLT	NS	119933	(1) GR-6	(1) UTU-5VLT, (1) UTU-7VLT	26
6.1	480	75-3/16	65-5/8	U-RAD-75LT	NS	119917	(1) GR-6	(1) UTU-5LT, (1) UTU-7LT	26
6.6	208	81-1/8	71-3/4	U-RAD-76VLT	NS	119968	(1) GR-2, (1) GR-5	(1) UTU-6VLT, (1) UTU-7VLT	28
6.6	240	81-1/8	71-3/4	U-RAD-76LT	NS	119941	(1) GR-2, (1) GR-5	(1) UTU-6LT, (1) UTU-7LT	28
6.6	275	81-1/8	71-3/4	U-RAD-76VLT	NS	119976	(1) GR-2, (1) GR-5	(1) UTU-6VLT, (1) UTU-7VLT	28
6.6	480	81-1/8	71-3/4	U-RAD-76LT	NS	119950	(1) GR-2, (1) GR-5	(1) UTU-6LT, (1) UTU-7LT	28
7.2	208	87-1/4	77-7/8	U-RAD-77VLT	NS	120002	(2) GR-4	(2) UTU-7VLT	30
7.2	240	87-1/4	77-7/8	U-RAD-77LT	NS	119984	(2) GR-4	(2) UTU-7LT	30
7.2	275	87-1/4	77-7/8	U-RAD-77VLT	NS	120010	(2) GR-4	(2) UTU-7VLT	30
7.2	480	87-1/4	77-7/8	U-RAD-77LT	NS	119992	(2) GR-4	(2) UTU-7LT	30

METAL SHEATH  
RADIANT

**Stock Status:** S = stock NS = non-stock

**To Order**—Specify model, PCN, kW, volts, quantity, optional grille and replacement elements (if needed).

1. Refer to Tubular Heaters section.
2. See Accessories in this section for ordering information.