

IntelliTrace

RSP

Remote Sensor Panel

- Consolidates Multiple Temperature Sensor Signals into a Single Enclosure
- Facilitates 1-252 Sensor Inputs
- Fully Integrated Package
- Works Seamlessly with ITAS & ITLS Heat Trace Control Systems
- Ordinary and Hazardous Locations
- Significant Installation Cost Savings
- Ideal for New Installations, Expansions & System Upgrades
- Local or Remote Locations
- Optional Wireless Communication
- Optional Enclosure Heater
- IP 66, NEMA 4 & 4X Enclosures
- UL/cUL, CE



Remote Sensor Panel



ITLS/ITAS IntelliTrace Heat Trace Control System



Description

The Chromalox RSP - Remote Sensor Panel greatly reduces installation costs as it facilitates the monitoring of 1 - 252 heat trace temperature sensor inputs within a single enclosure.

The RSP is a completely integrated package and it works seamlessly with the Chromalox IntelliTrace ITLS/ITAS heat trace control panels in either ordinary or hazardous areas.

The RSP communicates with the base panel via a single, twisted-pair wire return or via a wirelessly transmitted signal. Multiple RSP modules may be linked together for added convenience.

The RSP comes standard with NEMA 4 Painted Steel, NEMA 4X Fiberglass or NEMA 4X 304 SS wall mounted enclosure for Ordinary or Hazardous (Class I, Division 2) Areas, DIN rail mounted components, wired communication connection to the ITAS/ITLS Heat Trace Control Panel, Power-On lamp.

In addition, enclosure heaters for either ordinary or Class I, Division 2 areas as well as wireless communication between the RSP and base ITAS or ITLS control panels are available options.

Approvals

UL, cUL, CE

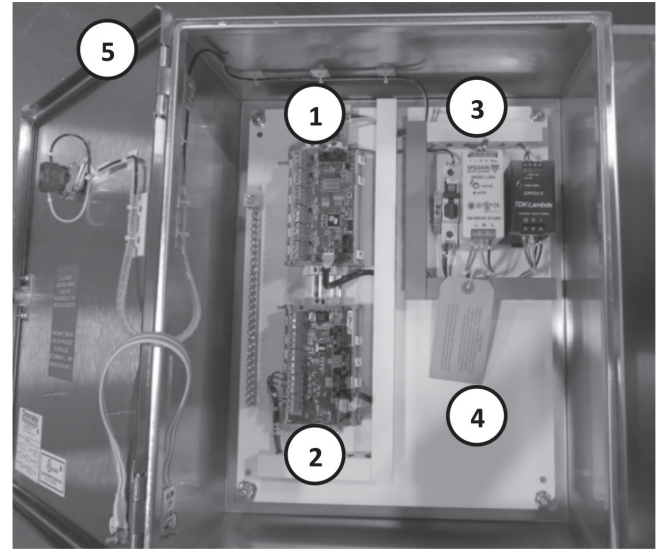
IntelliTrace

RSP

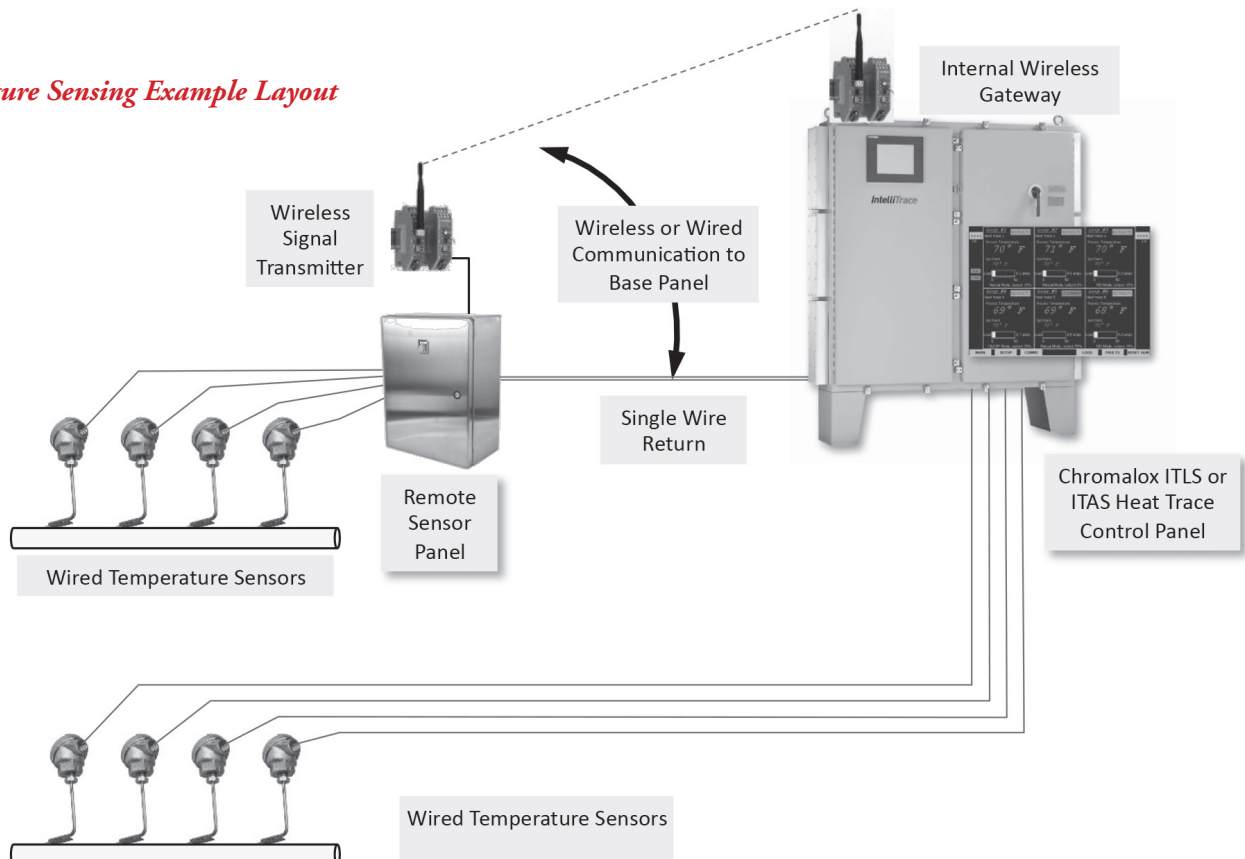
Remote Sensor Panel *(cont'd.)*

Remote Sensor Panel Example

1. **RTD Sensor Board** – facilitates the connection of up to 6 RTD sensor inputs per RTD Sensor board. Multiple boards may be employed in each enclosure.
2. **Communication / Distribution Board** – facilitates the intra-panel connection via Modbus RS485 (twisted pair). Wireless communication is available.
3. **Power Supply** – 100 – 240 VAC IN, 5 VDC out
4. **Enclosure Heater** – (not shown) Both ordinary area and Class I, Div. 2 designs are available
5. **Enclosure** – Fibreglas, Painted Steel or 304 Stainless Steel (316 SS is available as an option)



Temperature Sensing Example Layout



CONTROL SYSTEMS

IntelliTrace

RSP

Remote Sensor Panel *(cont'd.)*

Ordering Information

To Order — Complete the Model Number using the Matrix provided.

Model Remote Sensor Panel				
RSP	Remote Sensor Panel facilitates 1 - 252 heat trace temperature sensor inputs and is designed to work with the Chromalox IntelliTrace ITLS/ITAS heat trace control panels in either ordinary or hazardous areas. Standard Features: NEMA 4 Painted Steel, NEMA 4X Fiberglass or NEMA 4X 304 SS wall mounted enclosure, wired communication to the ITLS/ITAS Control Panel, Power-On lamp. Optional Features: Enclosure Heater, wireless communications. Approvals: UL, cUL, CE			
Fiberglass (F), Painted Steel (P)		Sensor Inputs	304 Stainless Steel (S)	
Code	Enclosure Size, In (cm)		Code	Enclosure Size, In (cm)
006F	20 x 16 x 9 (51 x 41 x 22)	1 - 6	006S	20 x 16 x 9 (51 x 41 x 22)
012F	20 x 16 x 9 (51 x 41 x 22)	7 - 12	012S	20 x 16 x 9 (51 x 41 x 22)
018F	20 x 16 x 9 (51 x 41 x 22)	13 - 18	018S	20 x 16 x 9 (51 x 41 x 22)
024P	20 x 16 x 9 (51 x 41 x 22)	19 - 24	024S	20 x 16 x 9 (51 x 41 x 22)
030P	24 x 20 x 10 (61 x 51 x 25)	25 - 30	030S	24 x 20 x 10 (61 x 51 x 25)
036P	24 x 20 x 10 (61 x 51 x 25)	31 - 36	036S	24 x 20 x 10 (61 x 51 x 25)
999P	TBD	37-252	999S	TBD

Code	Enclosure Heater (Heater will increase enclosure size)
0	None
1	Ordinary Areas (Codes 006X, 012X)
2	Ordinary Areas (Codes 018X, 024X)
3	Ordinary Areas (Codes 030X, 036X)
4	Hazardous Areas (Codes 006X, 012X) - Class I, Div. 2-Groups ABCD
5	Hazardous Areas (Codes 018X, 024X) - Class I, Div. 2-Groups ABCD
6	Hazardous Areas (Codes 030X, 036X) - Class I, Div. 2-Groups ABCD
9	Code 999P/999S

Code	Communication to ITLS/ITAS Control Panel
0	Wired (RS485)
1	Wireless (Ethernet/Wireless)
9	Other

RSP-	012S	-1	1	Typical Model Number
-------------	-------------	-----------	----------	-----------------------------

Optional Features:

- Enclosure Heater
- Wireless communications