

## NSA & SSNHM

1/2" Wide (NSA)  
1-1/8" Wide (SSNHM)



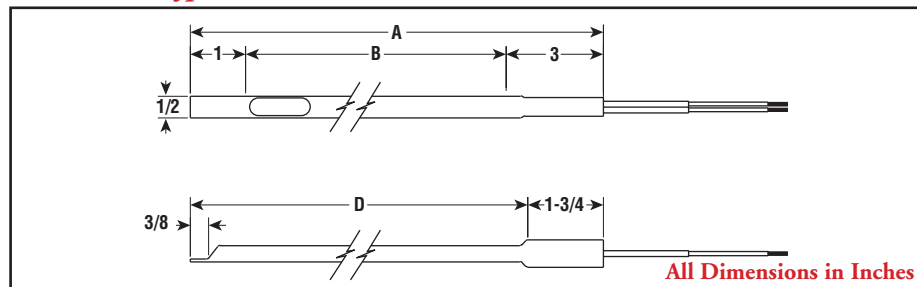
### Type NSA

- 7-1/16 - 16-1/4" Lengths
- 125 - 400 Watts
- 120 and 240 Volt
- One-Piece INCOLOY® Sheath
- 7 - 32 W/in<sup>2</sup>
- 1500°F Max. Sheath Temp.

### Type SSNHM

- 8-1/8 - 27-5/8" Lengths (with Optional Mounting Tabs)
- 200 - 800 Watts
- 120 and 240 Volt
- One-Piece Monel Sheath
- 900°F Max. Sheath Temp.
- 13 - 19 W/in<sup>2</sup>

### Dimensions (type NSA)



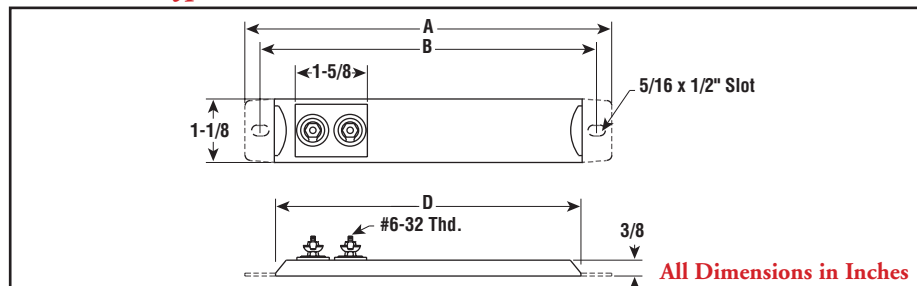
### Specifications and Ordering Information — NSA

Dimensions (In.)					INCOLOY® Sheath				Wt. (Lbs.)	
A	B	D	Watts	W/in <sup>2</sup>	Model	120V		240V		
						Stock	PCN	Stock	PCN	
7-1/16	3-1/16	5-5/16	125	32	NSA-711	NS	328292	—	—	0.2
10-11/16	6-11/16	8-15/16	300	20	NSA-1013	NS	328305	—	—	0.3
11-1/8	7-1/8	9-3/8	350	22	NSA-1123	—	—	NS	328348	0.4
13-3/4	9-3/4	12	200	11	NSA-1422	—	—	NS	328321	0.5
14-3/16	10-3/16	12-7/16	200	7	NSA-1412	NS	328313	—	—	0.5
16-1/4	12-1/4	14-1/2	400	19	<b>NSA-1624</b>	—	—	<b>S</b>	<b>328330</b>	0.6

**Stock Status:** S = stock AS = assembly stock NS = non-stock  
**To Order**—Specify model, PCN, watts, volts and quantity.



### Dimensions (type SSNHM)



### Specifications and Ordering Information — SSNHM

Dimensions (In.)					MONEL® Sheath				Wt. (Lbs.)	
A	B	D	Watts	W/in <sup>2</sup>	Model	120V		240V		
						Stock	PCN	Stock	PCN	
8-1/8	7-3/8	6-5/8	200	19	SSNHM-08	NS	142842	NS	—	0.4
9-5/8	8-7/8	8-1/8	275	19	SSNHM-09	NS	142850	NS	—	0.4
11-1/8	10-3/8	9-5/8	300	16	SSNHM-11	NS	142869	NS	—	0.5
12-1/8	11-3/8	10-5/8	320	16	SSNHM-12	NS	142877	NS	142885	0.6
14-1/8	13-3/8	12-5/8	375	14	SSNHM-14	NS	142893	NS	142906	0.7
15-3/8	14-5/8	13-7/8	415	14	SSNHM-15	NS	142914	NS	142922	0.8
18	17-1/8	16-1/2	495	13	SSNHM-18	NS	142930	NS	142949	1.4
19-5/8	18-7/8	18-1/8	550	13	SSNHM-19	NS	142957	NS	142965	1.4
21-1/8	20-3/8	19-5/8	600	13	SSNHM-21	NS	142973	NS	142981	1.6
22-5/8	21-7/8	22-1/8	625	13	SSNHM-22	NS	142990	NS	143001	1.8
23-7/8	23-1/8	22-3/8	675	13	SSNHM-24	NS	143010	NS	143028	1.8
25-5/8	24-7/8	24-1/8	725	13	SSNHM-25	NS	143036	NS	143044	2.1
27-5/8	26-7/8	26-1/8	800	13	SSNHM-27	NS	143052	NS	143060	2.3

**Stock Status:** S = stock NS = non-stock  
**To Order**—Specify model, PCN, watts, volts and quantity.

### Applications

Strip heaters are used for heat transfer by conduction or convection to heat liquids, air, gases and surfaces. See guidelines in the Strip Heater Overview section.

One-piece strip heaters are supplied without mounting tabs as standard.