

## FT-3 Fiberglass Tape PCN 389941

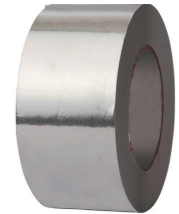
66' roll glass cloth installation tape with pressure sensitive thermosetting adhesive. 3/8" wide. 500°F (260°C) rating. Strap at one foot intervals. Minimum application temperature 40°F (5°C).

Tape Type	Rolls Needed per 100' of Pipe									
	Pipe Dia. (In.)									
	1/2"	1	2	3	4	6	8	10	12	
FT-3	1	2	4	4	6	8	10	12	15	



## AT-1 Aluminum Tape Cable Attachments PCN 383355

180' roll aluminum foil installation tape with pressure sensitive acrylic adhesive. 2-mil thickness with high tensile strength; 2-1/2" wide. 200°F (93°C) rating. Minimum application temperatures 40°F (5°C).



## PS-1, PS-2, PS-10, PS-20 Stainless Steel Pipe Straps PCN 382352, 382360, 382379, 382256

Used for attaching U Series kits to pipe.

PS-1	1/2" to 3/4" pipes (PCN 382352)
PS-3	1" to 3-1/2" pipes (PCN 382360)
PS-10	2-1/2" to 9" pipes (PCN 382379)
PS-20	9" to 19.5" pipes (PCN 382256)



## CL-1 Caution Labels PCN 382424

(5) electric heat tracing caution labels, weather resistant.



## CCH-2 Conduit Hub w/ Grounding Lug PCN 385650

Corrosion resistant hub for 3/4" conduit. Fits opening in PJB, DL, U Series and DTS. Includes ground connector.



# Industrial Self-Regulating & Constant Wattage Heat Trace Accessories

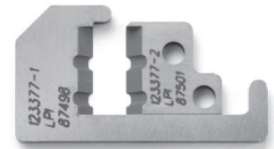
## ST-1 Stripping Tool PCN 393510

Tool for stripping the base jacket and the conductive matrix from the cable buss wires. The tool is stocked with 16 awg blades for stripping SRL, HSRL, SRM/E, HSRM and SRP and Thermwire products. (For use with DL & EL kits only)



## BL-2 Replacement Blades PCN 393537

Blade Set for Stripping SRL, HSRL, SRM/E HSRM and SRP Cables (For use with DL & EL kits only)



## SSK Single Entry Sealing Kit\* PCN 393617

This kit provides water-resistant cable entry for one cable. It has a corrosion-resistant pipe stand-off that brings the cable end outside of the insulation for easy connection to power. A pipe strap (PS Series) is required to attach this model for a pipe. A small pipe adapter is available for pipe sizes less than 1-1/2". Customer supplied junction box required. (For use with U & EL kits only)

\*Approved for CSA/FM Class I, Div. 2 groups A, B, C & D and Class II, Div. 2, Groups F, G when junction box that is used is NEMA 4X rated and certified by appropriate third party agency for use for that application and hazardous locations ratings rating (Div 2.)

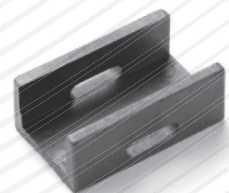


### Kit Includes:

- |                              |                                     |
|------------------------------|-------------------------------------|
| 1 Compression fitting        | 1 Self-regulating cable grommet     |
| 1 Locknut                    | 1 Constant wattage cable grommet    |
| 1 Silicone termination boots | 2 Uninsulated butt splice 14-16 AWG |
| 1 Pipe standoff              | 2 Insulated butt splice 14-16 AWG   |
| 1 O-ring                     |                                     |

## SPA Small Pipe Adapter PCN 393609

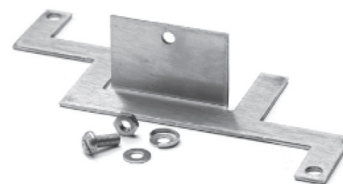
Pipe adapter to be used when pipe size is less than 1-1/2" diameter. (For use with U kits only)



# Industrial Self-Regulating & Constant Wattage Heat Trace Accessories

## MP-1 Mounting Plate Kit Attachments PCN 385780

For installing RTPC and RTST kits on flat surfaces.  
(For use with DL kits only)



## RBF-HT-03, RBF-HT-10 RBF-HT-50 Ambient Sensing Heat Trace RTD PCN 399066, 399074, 399052

RBF-HT-03	3' Long RTD w/FEP Insulation and 2" Leads (PCN 399066)
RBF-HT-10	10' Long RTD w/FEP Insulation and 2" Leads (PCN 399074 )
RBF-HT-50	50' Long RTD w/FEP Insulation and 2" Leads (PCN 399052)



## RBF-HT-03-FA-CF, RBF-HT-10-FA-CF RBF-HT-50-FA-CF Line Sensing Heat Trace RTD PCN 399031, 399040, 399058

RBF-HT-03-FA-CF	3' Long RTD w/FEP Insulation, flex armor, 1/2" fitting and 18" Leads (PCN 399031)
RBF-HT-10-FA-CF	110' Long RTD w/FEP Insulation, flex armor, 1/2" fitting and 18" Leads (PCN 399040)
RBF-HT-50-FA-CF	50' Long RTD w/FEP Insulation, flex armor, 1/2" fitting and 18" Leads (PCN 399058)



## GIC-AMB Ambient Sensing Heat Trace RTD PCN 392497

Sensor is used for measuring the ambient air temperature. The RTD sensor element is made up with a Copper sheath and can be installed directly to a controller or junction box using the 1/2" NPT conduit fitting. The 304 SS guard protects the probe against accidental damage.



## RBF185M-HT- 304-18RD-31SB/C Line Sensing Heat Trace RTD PCN 317315

Sensor used for measuring the surface temperature of piping of vessels. The RTD sensor element is made up with a 316 SS sheath, and with a flexible stainless steel mounting pad.

