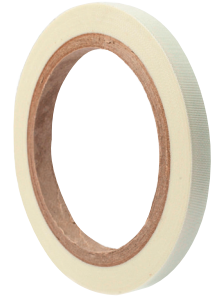


Accessories

Heat Trace Accessories

FT-66 Fiberglass Tape PCN 512680

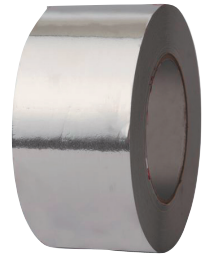
66' roll glass cloth installation tape with pressure sensitive thermosetting adhesive. 3/8" wide. 500°F (260°C) rating. Strap at one foot intervals. Minimum application temperature 40°F (5°C).



Tape Type	Rolls Needed per 100' of Pipe								
	Pipe Dia. (In.)								
	1/2"	1	2	3	4	6	8	10	12
FT-66	1	2	4	4	6	8	10	12	15

AT-18 Aluminum Tape Cable Attachments PCN 512698

180' roll aluminum foil installation tape with pressure sensitive acrylic adhesive. 2-mil thickness with high tensile strength; 2-1/2" wide. 200°F (93°C) rating. Minimum application temperatures 40°F (5°C).



SS-1, SS-3, SS-10, SS-20 Stainless Steel Pipe Straps PCN 512070, 512719, 512727, 512735

Used for attaching U Series kits to pipe.

SS-1	1/2" to 3/4" pipes (PCN 512070)
SS-3	1" to 3-1/2" pipes (PCN 512719)
SS-10	2-1/2" to 9" pipes (PCN 512727)
SS-20	9" to 19.5" pipes (PCN 512735)
SPA	(PCN 514271)



WL-05 Caution Labels PCN 512743

(5) electric heat tracing caution labels, weather resistant.



CH-75 Conduit Hub w/Grounding Lug PCN 512751

Corrosion resistant hub for 3/4" conduit. Fits opening in PJB, DL, U Series and DTS. Includes ground connector.



Accessories

Heat Trace Accessories

(cont'd.)

RG-PK-1 R&G Power Connection Kit PCN 386206

Power termination into junction box with one end seal and two warning labels.



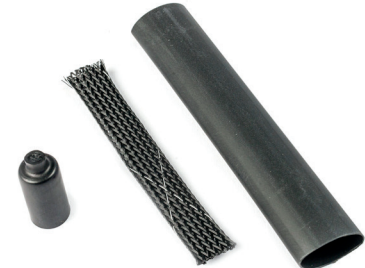
RG-SK-1 R&G Splice Kit PCN 386214

Materials to make one splice connection. Special weatherproof sleeving to insure trouble-free operation.



RG-EK-1 R&G End Seal Kit PCN 386257

Materials to make one end seal.



RCK-1 R&G Roof Clips PCN 340179

Pack of ten (10) Roof clips to attached heating cable to surface.



RDK-1 R&G Downspout Hanger Kit PCN 340160

Materials to suspend cable down a downspout. One downspout per kit.



Accessories Heat Trace Accessories *(cont'd.)*

LA-03, LA-10, LA-50 Ambient Sensing Heat Trace RTD 512768, 512778, 512786

- LA-03 3' Long RTD w/FEP Insulation and 2" Leads (PCN 512768)
- LA-10 10' Long RTD w/FEP Insulation and 2" Leads (PCN 512778)
- LA-50 50' Long RTD w/FEP Insulation and 2" Leads (PCN 512786)



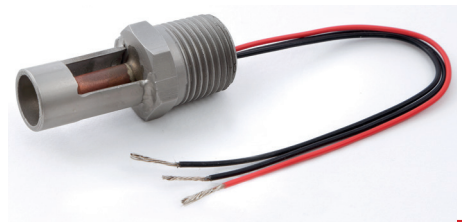
LN-03, LN-10, LN-50 Line Sensing Heat Trace RTD PCN 512794, 512807, 512815

- LN-03 3' Long RTD w/FEP Insulation, flex armor, 1/2" fitting and 18" Leads (PCN 512794)
- LN-10 10' Long RTD w/FEP Insulation, flex armor, 1/2" fitting and 18" Leads (PCN 512807)
- LN-50 50' Long RTD w/FEP Insulation, flex armor, 1/2" fitting and 18" Leads (PCN 512815)



AS-BM Ambient Sensing Heat Trace RTD PCN 512823

Sensor is used for measuring the ambient air temperature. The RTD sensor element is made up with a Copper sheath and can be installed directly to a controller or junction box using the 1/2" NPT conduit fitting. The 304 SS guard protects the probe against accidental damage.



PS-AH Line Sensing Heat Trace RTD PCN 512831

Sensor used for measuring the surface temperature of piping or vessels. The RTD sensor element is made up with a 316 SS sheath, and with a flexible stainless steel mounting pad.

