

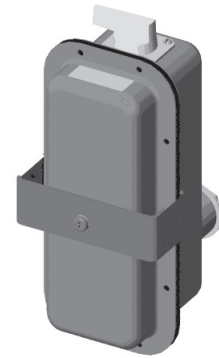
ChromaStar™ Infra-Red Radiant Heaters (cont'd.)

Accessories

For use with both Fixed Overhead and Portable Heaters

Disconnect Kits

The disconnect kit consists of a complete liquid tight assembly including a 3 pole 48 Amp switch, power terminal block and all hardware to mount either the fixed overhead or portable radiant heater.



Specifications and Ordering Information

Model No.	kW	Status	PCN	Wt. (Lbs.)
DS-50600	All	AS	340662	3

Portable Kits

Tip Over Switch Kits

Chromalox STARTIP tip-over switch kits can be easily added to all Chromalox STAR 06 or 14 series factory assembled portable heaters or fixed overhead heaters which have been modified by use of a portable STAR-CART kit. This kit is designed to de-energize the heating elements of unattended units in event the heater is accidentally knocked over. The kit includes a control circuit transformer, magnetic contactor, tip-over switch assembly and on-off toggle switch with rubber boot, completely prewired in a NEMA 4 enclosure. The kit also includes a 1" coupling, wiring between the contactor and heater, mounting bracket, hardware and instructions to complete the installation to the heater.



Specifications and Ordering Information

Model No.	kW	Status	PCN	Wt. (Lbs.)
STARTIP-8	208	NS	340670	14
STARTIP-2	240	NS	340689	14
STARTIP-7	277	NS	340697	14
STARTIP-4	480	NS	340700	14
STARTIP-6	600	NS	340718	14

Tip-Over Switch and Ground Fault Detector Kits

(for Portable STAR-06 and STAR-14 Heaters)

The Chromalox STAR-TG series kits include the components and features of the STARTIP tip-over kits with the additional protection provides by a ground fault detector. The ground fault detector will monitor for any gradual changes in the insulation level due to humidity or mechanical damage as they develop and will de-energize the contactor to prevent arcing type faults, preventing premature element failure and potential fire damage.

Specifications and Ordering Information

Model No.	kW	Status	PCN	Wt. (Lbs.)
STAR-TG-8	208	NS	340726	16
STAR-TG-2	240	NS	340734	16
STAR-TG-7	277	NS	340742	16
STAR-TG-4	480	NS	340750	16
STAR-TG-6	600	NS	340769	16

ChromaStar™

Accessories

(cont'd.)

Plug Kits for Portable Heaters

Plug Type	Model Number	Description	Volts	Amps	Config.	NEMA#	ANSI#	Fits Cable Dia.	Stock	PCN	Wt. (Lbs.)
Locking	PGL-15-20	3 Pole 4 Wire	250	20		L15-20	C73.85	.385"-.780	NS	338845	0.5
Locking	PGL-15-30	3 Pole 4 Wire	250	30		L15-30	C73.86	.385"-.780	NS	338853	0.5
Locking	PGL-16-30	3 Pole 4 Wire	480	30		L16-30	C73.88	.595"-.1.150	NS	338861	0.5
Locking	PGL-17-30	3 Pole 4 Wire	600	30		L17-30	C73.89	.595"-.1.150	NS	338870	0.5
Locking	PGL-3763C	2 Pole 3 Wire	600	50		-	-	.750"-.1.125	NS	338917	0.5
Locking	PGL-3765C	3 Pole 4 Wire	600	50		-	-	.750"-.1.125	NS	338925	0.5
Non Locking	PGN-6-50	2 Pole 3 Wire	250	50		6-50	C73.53	.625"-.1.187	NS	338888	0.5
Non Locking	PGN-15-20	3 Pole 4 Wire	250	20		15-20	C73.59	.390"-.775	NS	338896	0.5
Non Locking	PGN-15-50	3 Pole 4 Wire	250	50		15-50	C73.61	.750"-.1.250	NS	338909	0.5

Cable Kits for ChromaStar™ Series Portable Radiant Heaters

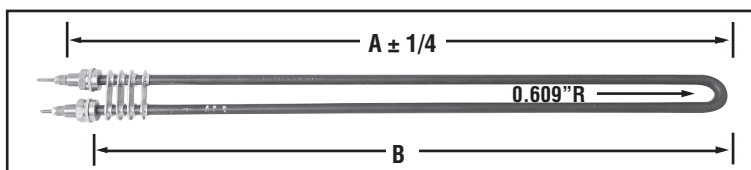
Cable packages include 25 feet Type SO cable, with either 3-conductors or 4-conductors, depending on the heater requirements. Each cable assembly includes the proper cord (connector). Plugs are not included. All models are factory wired for 3-phase, but can be field wired for single phase, select plug and cord accordingly.

Model No.	Cable Specifications			Cord Connector	Stock	PCN	Wt. (Lbs.)
	Size/Type	Max. Amp	Temperature Ratings	NPT			
PLC-2514-4	14/4SO	15	90 Deg. C	3/4"	NS	295427	7
PLC-2514-3	14/3SO	18	90 Deg. C	3/4"	NS	295670	23
PLC-2512-4	12/4SO	20	90 Deg. C	1"	NS	295435	9
PLC-2512-3	12/3SO	25	90 Deg. C	3/4"	NS	295662	6
PLC-2510-3	10/3SO	30	90 Deg. C	1"	NS	295443	9
PLC-2508-3	8/4SO	35	90 Deg. C	1"	NS	295460	15
PLC-2506-4	6/4SO	45	90 Deg. C	1"	NS	295494	17
PLC-2506-3	6/3SO	55	90 Deg. C	1"	NS	295486	16

SO = hard Service Cord, 600V Length = 25 Feet

Replacement Elements

Model No.	kW	Volts	Win2	Dimensions - inches		Status	PCN	Wt. Lbs.
				A	B			
UTU-STAR 21	1.5	120	32	21-1/2	20-1/2	NS	106059	2
UTU-STAR 28	2	208	42	21-1/2	20-1/2	NS	106067	3
UTU-STAR 22	2	240	42	21-1/2	20-1/2	NS	106075	3
UTU-STAR 27	2	277	42	21-1/2	20-1/2	NS	106083	3
UTU-STAR 24	2	480	42	21-1/2	20-1/2	NS	106091	3
UTU-STAR 26	2	600	42	21-1/2	20-1/2	NS	106104	3
UTU-STAR 48	4.5	208	42	43-3/8	42-3/8	NS	106403	4
UTU-STAR 42	4.5	240	42	43-3/8	42-3/8	NS	106411	4
UTU-STAR 47	4.5	277	42	43-3/8	42-3/8	NS	106796	4
UTU-STAR 44	4.5	480	42	43-3/8	42-3/8	NS	106964	4
UTU-STAR 46	4.5	600	42	43-3/8	42-3/8	NS	106972	4



UTU-STAR

ChromaStar™ Accessories (cont'd.)

Accessories for Fixed Overhead Heaters

Hanger Kit

Hanger kits include 24 feet of chain, 4 “S” hooks to mount units in a fixed overhead position using the universal mounting brackets included on the back of fixed overhead radiant models. The chain is long enough to allow all heaters to be mounted up to 6 feet from the ceiling.

Specifications and Ordering Information

Model No.	kW	Status	PCN	Wt. (Lbs.)
STAR-HK	All	S	340654	2

Portable Cart Kits

Chromalox series ChromaStar™ fixed overhead radiant heaters can be field converted to portable spot heaters with the use of the cart kits. Each kit includes wheels, legs, handle, grill(s), baffle (if required) and all of the necessary hardware to complete the modification. These kits are easy to install with standard tools.

Specifications and Ordering Information

Model No.	kW	Status	PCN	Wt. (Lbs.)
STAR-06A CART	6	NS	340830	8
STAR-14A CART	13.5	S	340849	8

Floor Protection Baffle Kit

The Chromalox safety baffle kit includes a reflector baffle which can be field installed on the lower reflective panel on portable STAR radiant heaters. The baffle will protect temperature sensitive flooring materials such as vinyl tile from being damaged due to radiant heat.

Specifications and Ordering Information

Model No.	kW	Status	PCN	Wt. (Lbs.)
FP-614	6 or 13.5	NS	340865	2

Safety Grill Kits

The safety grill kits contain one (2kW, 4.5kW and 6kW) or two grills (13.5kW) to protect personnel from coming in contact with hot heating elements. The grills are constructed of heavy gauge plated steel and are simple to install.

Specifications and Ordering Information

Model No.	kW	Status	PCN	Wt. (Lbs.)
GR-2	2	S	111878	5
GR-4	4.5	S	111894	5
GR-6KW	6	NS	340638	6
GR-14AKW	13.5	NS	340857	12

Ground Fault Detection

The Chromalox STAR-GF series wall mounted ground fault detectors are designed to monitor for any gradual changes in the insulation level due to humidity or mechanical damage as they develop and will de-energize the load to prevent arcing type faults, preventing premature element failure and potential fire damage. The detector consists of a ground fault sensor, control circuit transformer, magnetic contactor and an on off toggle switch with rubber boot, completely pre-wired in a NEMA 4 enclosure.

Specifications and Ordering Information

Model No.	Heater Volts	Status	PCN	Wt. Lbs.
STAR-GF-8	208	NS	340777	16
STAR-GF-2	240	NS	340785	16
STAR-GF-7	277	NS	340793	16
STAR-GF-4	480	NS	340806	16
STAR-GF-6	600	NS	340814	16

