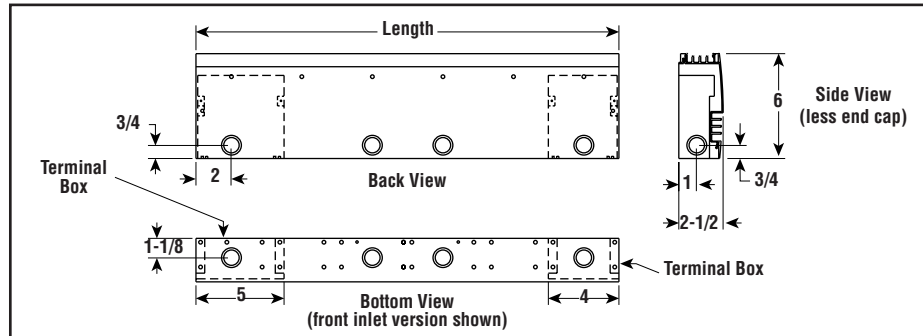


## CAF-6 Architectural Draft Barrier Convection Heater



- 500 - 2,500 Watts
- 1,706 - 8,530 Btuh
- 120, 208, 240 and 277 Volt
- Single Phase
- 24.3 - 120.3" Lengths
- 250 W/Ft.

### Dimensions (Inches)



### Applications

Ideal for commercial buildings under large windows or walls constructed of glass. For total or supplemental heat in:

- Lobbies
- Vestibules
- Hallways
- Corridors
- Banks
- Hospitals
- Condominiums
- Offices and Other Areas.

### Construction

Painted Finish is hybrid polyester epoxy powder coat process. Clear and Bronze 40 are anodized aluminum finishes.

Standard — White, Almond, Clear Aluminum or Bronze 40 Aluminum.

Front and Top Surface is constructed of 14 gauge extruded aluminum with punched air intake and exhaust vents. Cabinet back and bottom are fabricated from satin coat steel with multiple knockouts for convenient power connection. Endcaps are field removable for continuous heater installation.

Stainless Steel Sheath encloses a nickel chromium element compacted in a mineral insulation. Aluminum fins are positively staked to the surface and provide superior heat transfer.

Choice of Cold Air Intake, front or bottom.

Custom — Contact your Local Chromalox Sales office.

### Features

Full Length Thermal Protection.

Floating Element Suspension Minimizes Expansion Noise.

Built-in Wireway for Continuous Installation

Optional Built-in Tamperproof Thermostat or Adjustable Thermostat Controls may be mounted in either the left or right hand termi-

nal box. Built-in low voltage controls, if specified, are located in the right hand terminal box. Power connection can be made at either end of the heater.

### Advantages

- Easy Mounting and Wiring
- Advanced Architectural Low Profile Styling
- Attractive Appearance

### Specifications and Ordering Information

Electrical					Dimensions (In.)			Ordering		Wt. (Lbs.)
Volts	Phase	Watts	Amps	Btuh	Height	Length	Depth	Model	Stock	
120	1	500	4.2	1,706	6	24.3	2.5	CAF-6F205	NS	18.7
208	1	500	2.4	1,706	6	24.3	2.5	CAF-6F205	NS	18.7
240	1	500	2.1	1,706	6	24.3	2.5	CAF-6F205	NS	18.7
277	1	500	1.8	1,706	6	24.3	2.5	CAF-6F205	NS	18.7
120	1	750	6.3	2,259	6	36.3	2.5	CAF-6F307	NS	25.4
208	1	750	3.6	2,259	6	36.3	2.5	CAF-6F307	NS	25.4
240	1	750	3.1	2,259	6	36.3	2.5	CAF-6F307	NS	25.4
277	1	750	2.7	2,259	6	36.3	2.5	CAF-6F307	NS	25.4
120	1	1,000	8.3	3,412	6	48.3	2.5	CAF-6F410	NS	32.1
208	1	1,000	4.8	3,412	6	48.3	2.5	CAF-6F410	NS	32.1
240	1	1,000	4.2	3,412	6	48.3	2.5	CAF-6F410	NS	32.1
277	1	1,000	3.6	3,412	6	48.3	2.5	CAF-6F410	NS	32.1
120	1	1,250	10.4	4,265	6	60.3	2.5	CAF-6F512	NS	40.2
208	1	1,250	6	4,265	6	60.3	2.5	CAF-6F512	NS	40.2
240	1	1,250	5.2	4,265	6	60.3	2.5	CAF-6F512	NS	40.2
277	1	1,250	4.5	4,265	6	60.3	2.5	CAF-6F512	NS	40.2
120	1	1,500	12.5	5,118	6	72.3	2.5	CAF-6F615	NS	48.2
208	1	1,500	7.2	5,118	6	72.3	2.5	CAF-6F615	NS	48.2
240	1	1,500	6.3	5,118	6	72.3	2.5	CAF-6F615	NS	48.2
277	1	1,500	5.4	5,118	6	72.3	2.5	CAF-6F615	NS	48.2
208	1	1,750	8.4	5,971	6	84.3	2.5	CAF-6F717	NS	57.6
240	1	1,750	7.3	5,971	6	84.3	2.5	CAF-6F717	NS	57.6
277	1	1,750	6.3	5,971	6	84.3	2.5	CAF-6F717	NS	57.6
208	1	2,000	9.6	6,824	6	96.3	2.5	CAF-6F820	NS	67.0
240	1	2,000	8.3	6,824	6	96.3	2.5	CAF-6F820	NS	67.0
277	1	2,000	7.2	6,824	6	96.3	2.5	CAF-6F820	NS	67.0
208	1	2,250	10.8	7,677	6	108.3	2.5	CAF-6F922	NS	77.7
240	1	2,250	9.4	7,677	6	108.3	2.5	CAF-6F922	NS	77.7
277	1	2,250	8.1	7,677	6	108.3	2.5	CAF-6F922	NS	77.7
208	1	2,500	12	8,530	6	120.3	2.5	CAF-6F025	NS	88.4
240	1	2,500	10.4	8,530	6	120.3	2.5	CAF-6F025	NS	88.4
277	1	2,500	9	8,530	6	120.3	2.5	CAF-6F025	NS	88.4

Stock Status: S = stock AS = assembly stock NS = non-stock  
To Order — Specify model, watts, volts, phase and quantity.

## CAF-6

### Architectural Draft Barrier Convection Heater *(cont'd.)*

#### Ordering Information

To Order —  
Complete the  
Model Number  
using the Matrix  
provided.

#### Model Architectural Draft Barrier Convection Heater

#### CAF-6

##### Code Inlet

**F** Front  
**B** Bottom

##### Code Length (Ft.)

<b>2</b>	2	<b>7</b>	7
<b>3</b>	3	<b>8</b>	8
<b>4</b>	4	<b>9</b>	9
<b>5</b>	5	<b>10</b>	10
<b>6</b>	6		

##### Code Wattage (see table)

##### Code Voltage/Phase

<b>11</b>	120/1	<b>31</b>	240/1
<b>21</b>	208/1	<b>41</b>	277/1

##### Code Finish

Painted		Anodized	
<b>68</b>	Almond	<b>07</b>	Bronze
<b>02</b>	White	<b>10</b>	Clear

##### Code Control Options (factory installed)

<b>A1</b>	Built-in SP tamperproof thermostat 120 - 277V
<b>A2</b>	Built-in DP tamperproof thermostat 120 - 277V
<b>F1</b>	Built-in SP adjustable thermostat 120 - 277V
<b>F2</b>	Built-in DP adjustable thermostat 120 - 277V
<b>A4</b>	Built-in 24V low voltage relay 120 - 277V
<b>A5</b>	Built-in 24V low voltage relay and transformer 120 - 277V
<b>A8</b>	Built-in disconnect switch, rated 277V @ 20A
<b>B1</b>	Built-in SP tamperproof thermostat and disconnect
<b>B2</b>	Built-in DP tamperproof thermostat and disconnect
<b>F3</b>	Built-in SP adjustable thermostat and disconnect
<b>F4</b>	Built-in DP adjustable thermostat and disconnect
<b>D1</b>	Built-in low voltage relay and disconnect
<b>D2</b>	Built-in low voltage relay and transformer and disconnect

**CAF-6 B 3 07 11 68 A1 Typical Model Number**

#### Accessories (Field Installed)

ALPKS2 — Pedestal kit for units up to 4 feet in length (2 pedestals included)

ALPKS3 — Pedestal kit for units above 4 feet in length (3 pedestals included)

ALF6IC90 — Inside 90 degree corner

ALF6OC90 — Outside 90 degree corner

Filler Sections — Contact your Local Chromalox Sales office for available sizes.

CONVECTION