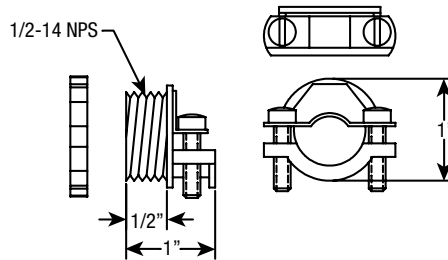


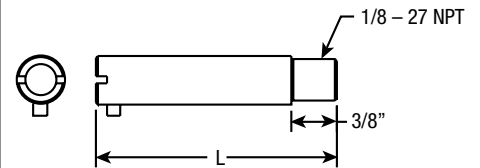
Accessories

- Connectors
- Fittings
- Adapters



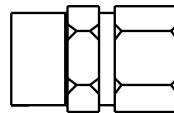
BX Connector

Part Number	Material
PC4387-1	Galvanized Steel



Quick Detach Adapters

Part Number	"L" Dimension	Material
TC6136-8	7/8"	Stainless Steel
TC6136-12	1-1/4"	Plated Steel
TC6136-15	1-1/2"	Plated Steel
TC6136-20	2"	Plated Steel
TC6136-25	2-1/2"	Plated Steel
TC6136-32	3-1/4"	Plated Steel
TC6136-40	4"	Plated Steel

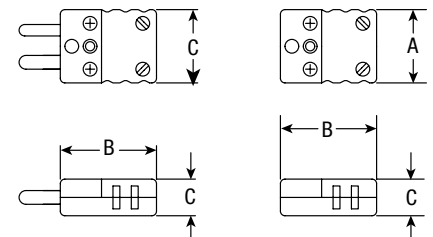


Compression Fittings

Supplied with Metal Ferrules Only			
Part Number	TC Size	Thread Size	Material
PC4381-1	3/16"	1/8 NPT	Brass
PC4381-2	1/8"	1/8 NPT	Brass
PC4381-6	3/16"	1/4 NPT	Brass
PC4381-8	1/8"	1/8 NPT	Stn. Stl.
PC4381-9	1/8"	1/4 NPT	Stn. Stl.
PC4381-10	3/16"	1/8 NPT	Stn. Stl.
PC4381-11	3/16"	1/4 NPT	Stn. Stl.
PC4381-12	1/4"	1/8 NPT	Stn. Stl.
PC4381-13	1/4"	1/4 NPT	Stn. Stl.

Connector Dimensions

		Dim. A	Dim. B	Dim. C
Male Connector	Mini	5/8"	3/4"	5/16"
	Standard	1"	15/16"	1/2"
Female Connector	Mini	5/8"	3/4"	5/16"
	Standard	1"	15/16"	1/2"



SENSORS