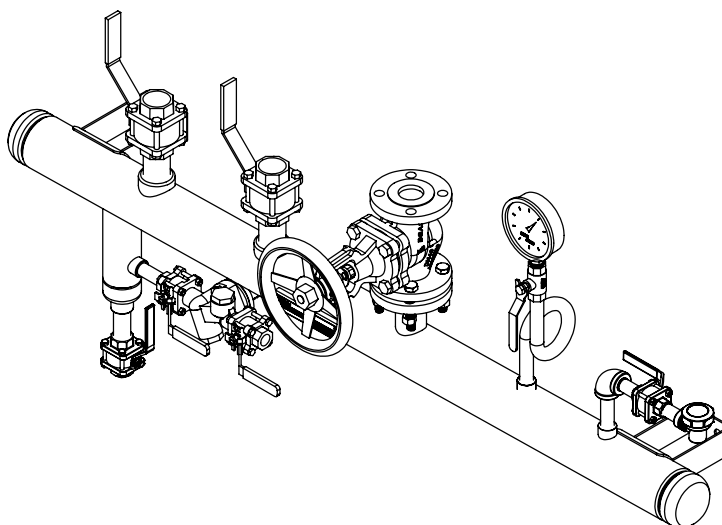


SMK Steam Manifold Kit

- 150 psig Design Pressure
- 366°F Design Temperature
- Manufactured to ASME SEC VIII DIV. 1, 2023 Edition (Not Stamped or Registered)
- Ball Valve Inlets
- Flanged Bellows Valve Outlet
- Includes a Pressure Gauge, Air Vent, Compact Steam Trap, Drain, and Mounting Lugs



Applications

The **Steam Manifold Kits** are for use with a quantity of 2-4 of our 180kW CES steam generators where having a single generator is not necessary. This allows them to be connected in parallel to achieve higher demands (up to 720kW).

Features

Ball Valve Inlets for use as an isolating valve, allowing service without removal from the pipeline. 1-1/4" NPT for all units.

Bellows Valve Outlet is a low maintenance flanged in-line Isolation Valve it is fitted with a throttling valve plug that allows close control when opening the valve. Locking screw and stroke limiter maintains correct flow rate once the flow rate is obtained.

Compact Trapping Module includes upstream and downstream isolation ball valves, cast connector body with an integrated debris strainer, quick fit universal steam trap mounting and anti-surge check valve. Lockable handles are a product standard, minimizing the possibility of accidental or unauthorized operation.

Features(cont'd)

Integral Pressure Gauge indicates the operating pressure of the system.

Air Vent automatically vents air in order to help maintain maximum heat transfer of the steam system.

Drain is a 3/4" NPT ball valve.

Mounting Lugs which allow easy lifting as well as a convenient mounting location.

Model Table

Option	Total kW	Steam Capacity*	Outlet Size	Manifold Part#
Two inlet	360kW	1084 lbs/hr	1-1/2" - 150#	300183001
Three inlet	540kW	1626 lbs/hr	2" - 150#	300183002
Four inlet	720kW	2168 lbs/hr	2-1/2" - 150#	300183003

*Steaming capacity is based on producing saturated steam at 212°F 90psig with 50°F feed water.

**Physical Dimensions can be found below.

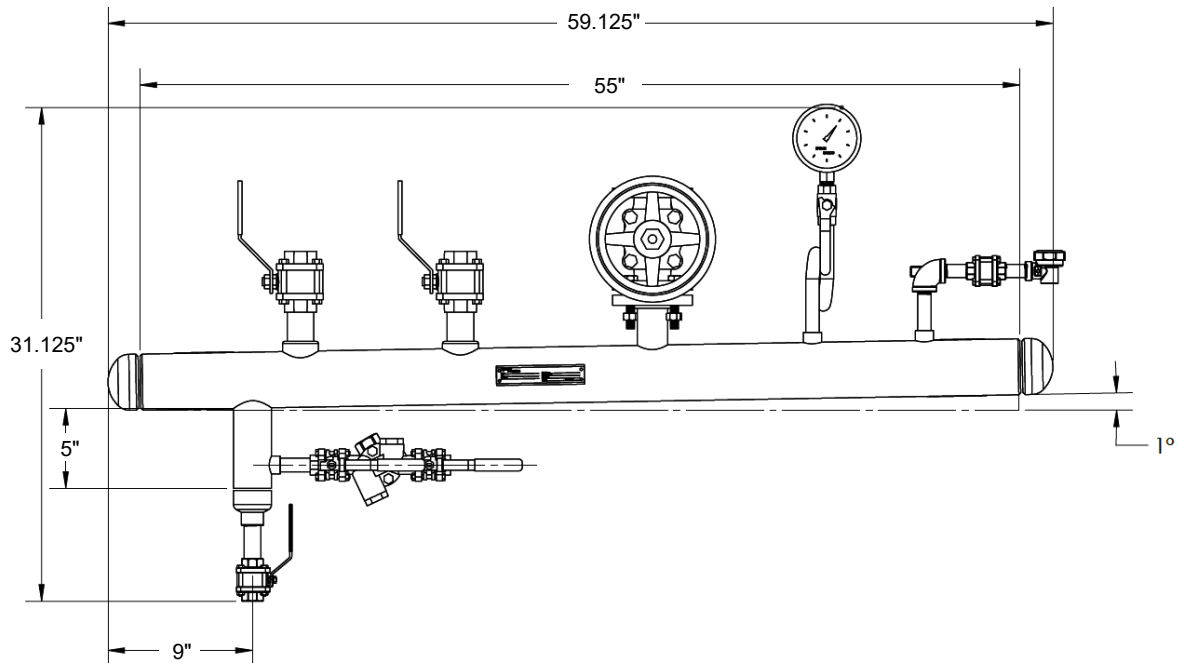
"Under the U.S. Federal Safe Drinking Water Act, it is unlawful to install or use this product in any service that comes into contact with water for human consumption (including drinking, food or beverage preparation, hand washing, or teeth brushing). This product is intended exclusively for use in non-potable service."

SMK

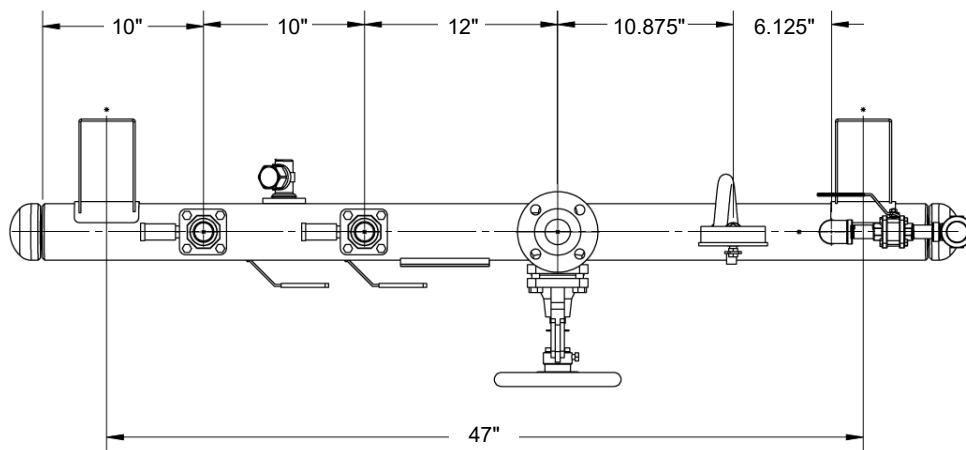
Steam Manifold Kit

Dimensions (Inches) Two Boiler Manifold

Front View:



Top View:

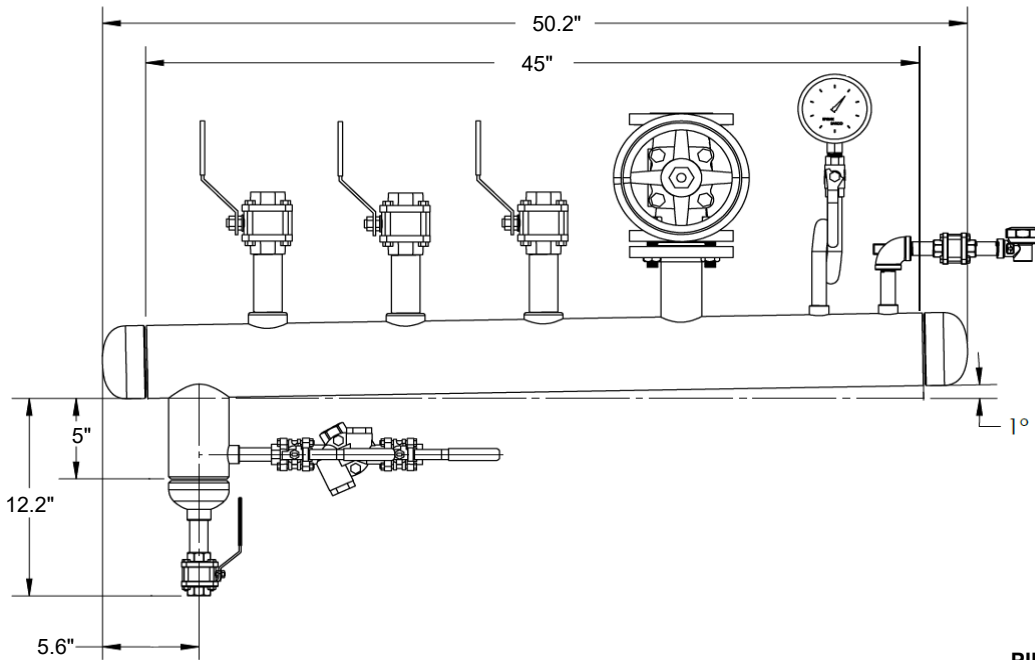


SMK

Steam Manifold Kit

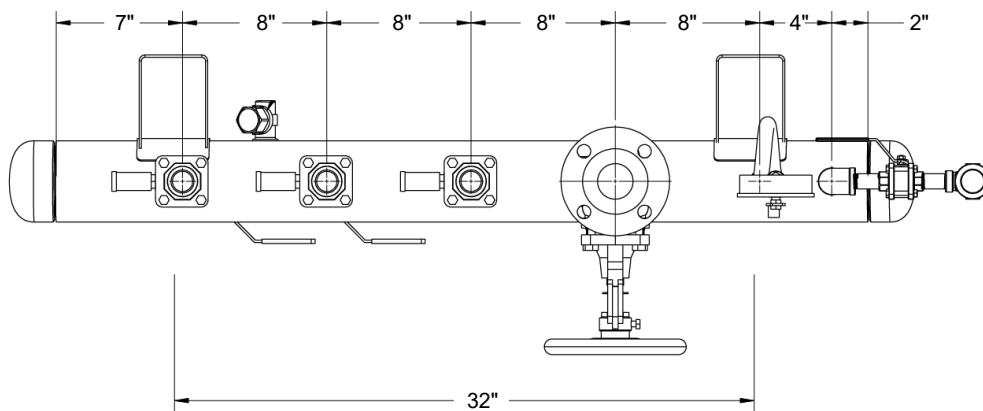
Dimensions (Inches) Three Boiler Manifold

Front View:



PIPE 4" SCH 40

Top View:

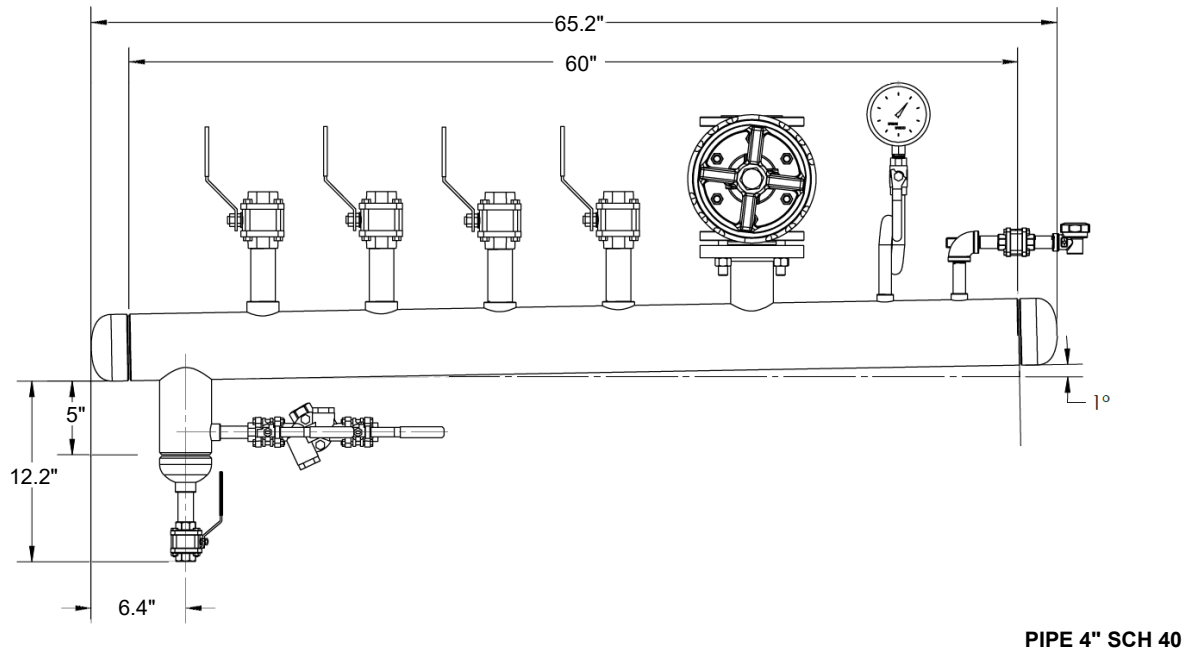


SMK

Steam Manifold Kit

Dimensions (Inches) Four Boiler Manifold

Front View:



Top View:

