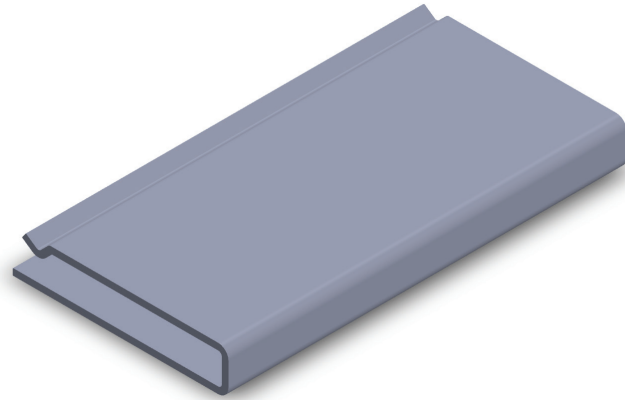


CHTB

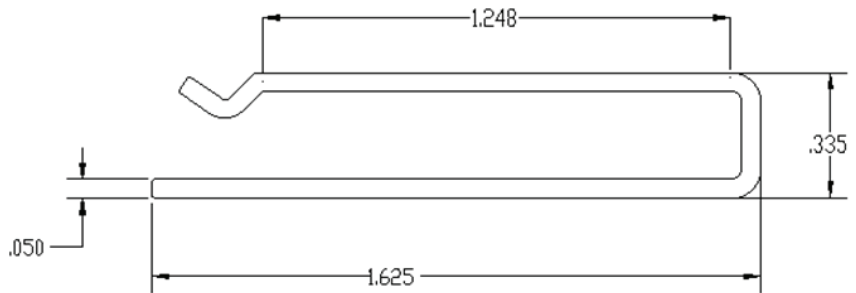
Cable Heat Transfer Bracket

- Roof De-Icing solution by mechanical protecting the heating cable
- Maximum heat transfer of heating cable to aluminum panel
- One, or two runs of CPR heating cable per panel
- Modular design allows multiple panels to be connected
- Aesthetically pleasing Aluminum appearance
- Protects against icicles, water damage, mold and mildew
- Dimensions: 6' L x 5" W x 0.75" H (1828 mm x 127 mm x 19.05 mm H)
- Utilizes Chromalox heat trace



Description

The Chromalox Cable Heat Transfer Bracket is designed to mount on the roof or gutters and embeds one or two runs of self-regulating heating cable. It is used to enhance the heat transfer from the heating cable to the snow and create larger drain paths.



Note: CHTB comes with the above bracket. Adhesives, junction boxes, conduits and heating cable are provided by separately. Appropriate control and monitoring systems should be used with the CHTB system. For heat trace specs see appropriate heat trace datasheet.

MODEL	DESCRIPTION	PCN
CHTB	Cable Heat Transfer Bracket	532373
CRD-ADH	Adhesion Primer (1 Pint)	514992
CRD-TAPE	100FT Double Sided Tape	515004

The Alpine Snow Guards is a registered trademark of Alpine Snow Guards.