

# Operations Manual for FPASM Panels



PK557-1  
0135-30241  
April 2021

# Operation Instructions for FPASM Panels

## Overview

The HMI displays the status of each circuit connected to the panel, as well as the load contactor and any system alarms. The main screen displays the status of loops 1-20, pressing NEXT will display loops 21-40, and pressing NEXT one final time will display loop 41-48. Figure 1 is showing the main load contactor OFF, and as a result all circuits are showing de-energized.

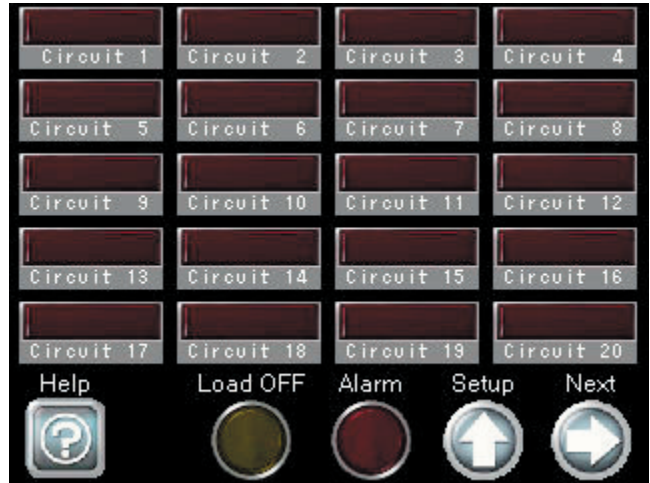


Figure 1 - Main Screen

---

## Setup

Pressing the SETUP button will display SETUP screen, which is password protected. Here, the operator can configure the maximum number of circuits, initialize the circuits, or change/save the circuit names. The number of circuits will be set from the factory to match the panel that was purchased. See Figure 2.

When the circuits are connected and the load contactor is energized, the 'Initialize' button will need pressed (Figure 3). This scans the inputs for active circuits, and flags them as enabled. Once enabled, the system will begin monitoring the circuit for voltage loss (tripped breaker). Only circuits that have been initialized will be monitored, if there are circuits that are intentionally turned off, the initialize procedure will need done to disable monitoring on those circuits. If the load contactor is not energized, the initialization cannot be done (Figure 4).

By default, the circuits will be named as shown in Figure 1 (Circuit 1, Circuit 2, etc..). However, these can be modified by pressing on the text. These modified names are stored in the CCU, and will need saved to Flash memory to avoid being lost in the event of a power loss. If the names are not saved, there is a risk of them being reverted to their default value. The default names can be restored at any time by pressing the Load Default Names button.

All of these features can be reviewed by pressing the SETUP HELP button (Figure 5).

Password: CHX1347

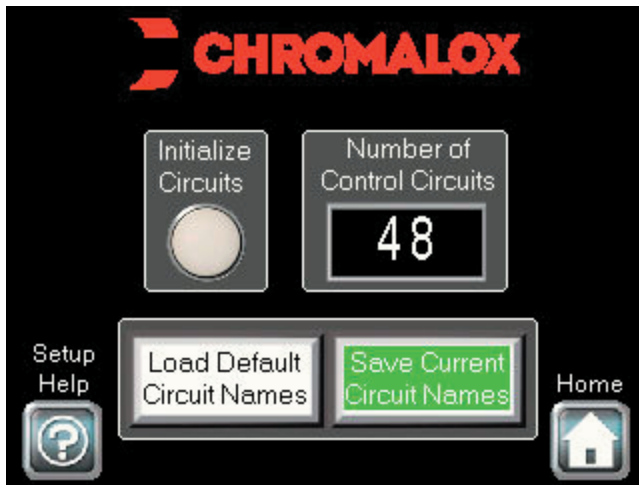


Figure 2 - Setup Screen



Figure 3 - Initialize, Load ON

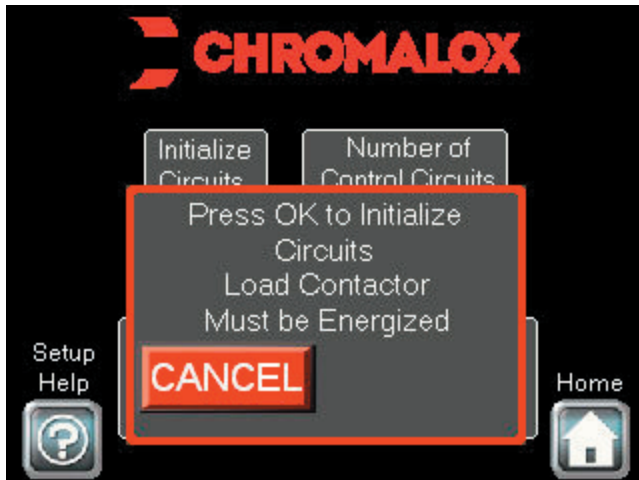


Figure 4 - Initialize, Load OFF

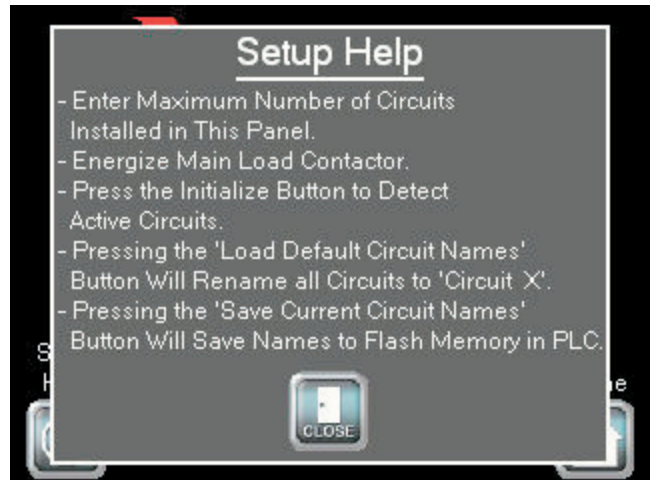


Figure 5 - Setup Help

## Operation

Enabled circuits have 3 possible states as shown in Figure 6:

- Disabled (not initialized) (Dark Red)
- Enabled and OK (White)
- Enabled and Not Energized (Bright Red)

These states can be reviewed at any time by pressing the HELP button on the main screen.

If an initialized circuit loses voltage while the load contactor is energized, it will go into alarm. When this happens, the ALARM light will flash, and the common alarm outputs on the CCU will energize (Figure 7). If the load contactor is de-energized, the indicators will turn red indicating loss of load voltage but will not indicate an alarm. The CCU has 2 relay outputs to signal a common alarm. Output 0 is normally closed, which will open on alarm. Output 1 is normally open, which will close on alarm. If the HMI is in screen saver mode, an active alarm will wake the display and navigate to the screen with the alarm. For example, if circuit 24 were to alarm while the HMI was in Screen Saver, the CCU would wake up the HMI and send it to the second screen (Loops 21-40).

The CCU (PLC) is equipped with a battery to prevent non-volatile memory loss during a loss of power. If this battery is low voltage or missing, the HMI will alert the operator (Figure 8) but the alarm outputs on the CCU will not be affected.



Figure 6 - Circuit Status

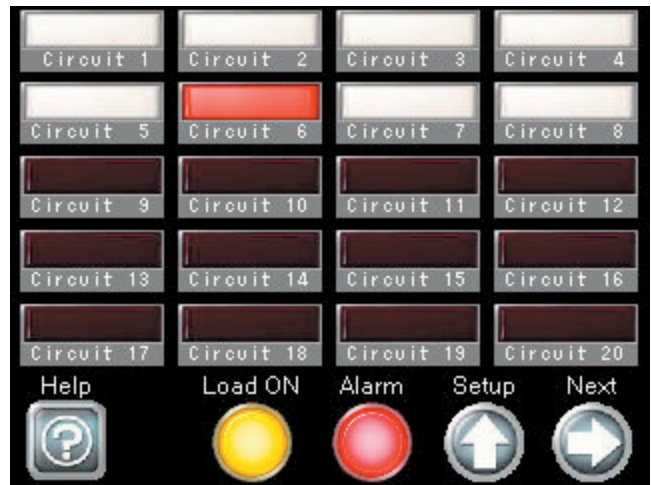


Figure 7 - Circuit Alarm

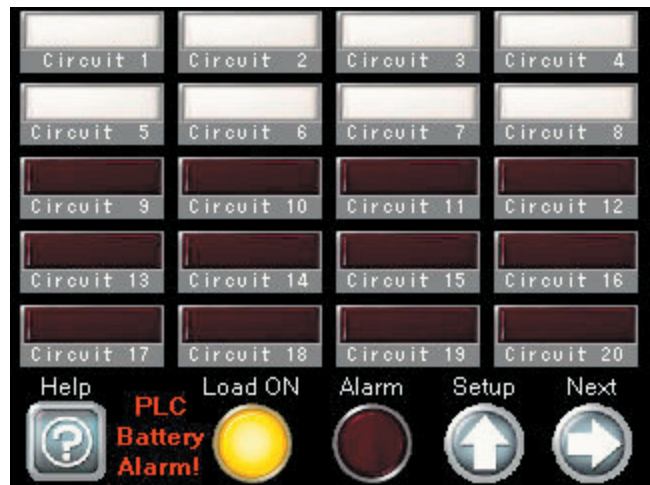


Figure 8 - PLC Battery Alarm

### Limited Warranty:

Please refer to the Chromalox limited warranty applicable to this product at <http://www.chromalox.com/customer-service/policies/termsforsale.aspx>.

**Chromalox, Inc.**  
**1347 Heil Quaker Boulevard**  
**Lavergne, TN 37086**  
**(615) 793-3900**  
**www.chromalox.com**