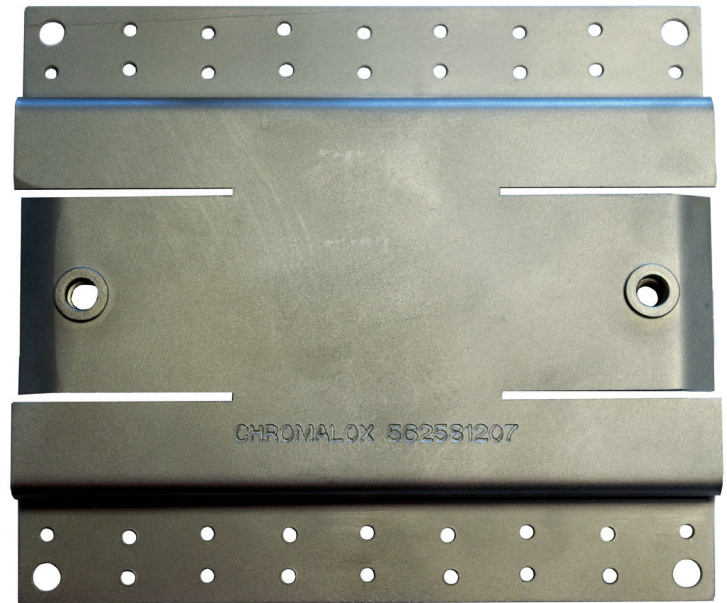


Installation Instructions

UTM Universal Tank Mounting Kit

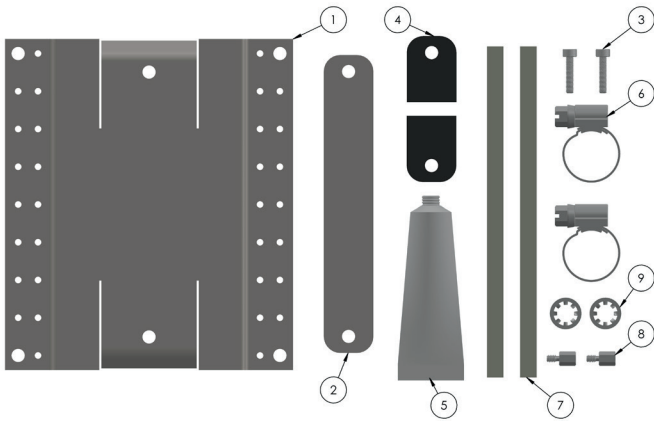
for use with U Series, DL Series, HL Series
and MI Series Kits



PJ957
161-562581-232
January 2018

UTM Universal Tank Mounting Kit

for use with U Series, DL Series, HI Series and MI Series Kits I



Item	Qty	Description
1	1	SS Mounting Plate
2	1	SS Mounting Bar
3	2	SS Socket Head Cap Screw
4	2	Rubber Shim
5	1	Silicone Adhesive (Dow Corning 732)
6	2	1" SS Pipe Strap
7	2	Glass Tape Strips
8	2	SS Standoff
9	2	SS Lock Washer

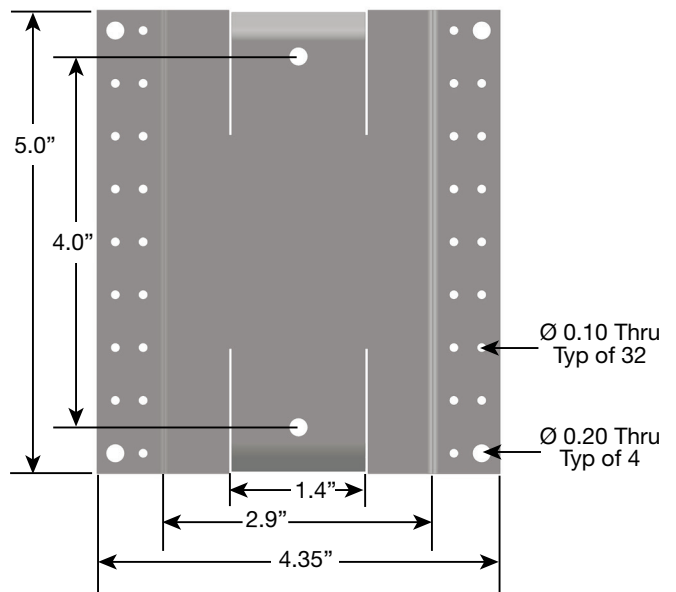
General

The Chromalox UTM Universal Tank Mounting Bracket is used for mounting U Series, DL Series, HL Series or MI series kits on a tank surface. The UTM is manufactured of 304 stainless steel for use in most corrosive industrial environments. Kits are mounted to the bracket using supplied hardware (Power, Tee/Splice and End Seal Kits sold separately).

Tools Required for Kit Installation



Actual Kit Dimensions



⚠ WARNING

HAZARD OF ELECTRIC SHOCK. Disconnect all power before opening. All installations must be effectively grounded in accordance with the National Electrical Code to eliminate shock hazard. To avoid electrostatic discharge wipe with a damp cloth.

⚠ WARNING

Turn off power before removing junction box cover at all times.

⚠ WARNING

Users should install adequate controls and safety devices with their electric heating equipment. Where the consequences of failure may be severe, back-up controls are essential. Although the safety of the installation is responsibility of the user, Chromalox will be glad to assist in making equipment recommendations.

Pre-Installation Steps

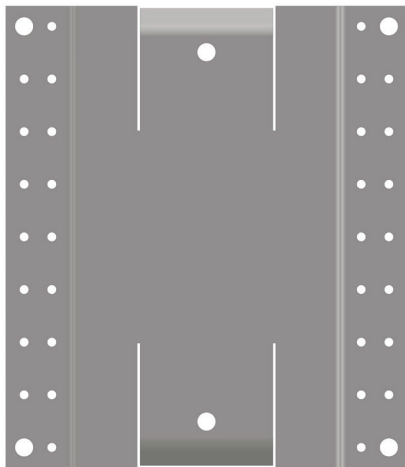


Figure A - Vertical Mounting Position

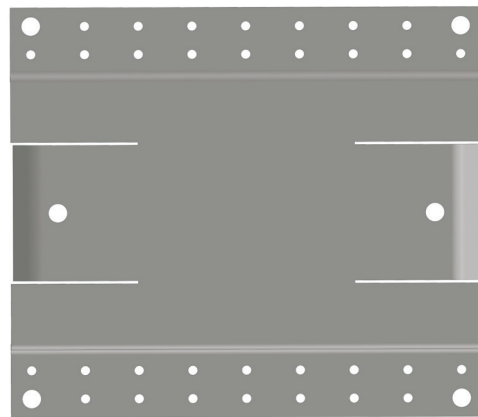


Figure B - Horizontal Mounting Position

1. If the tank is smaller than 8' in diameter the mounting plate must be mounted vertically as shown in Figure A. If the tank is greater than 8' in diameter the mounting plate can be installed vertically or horizontally as shown in Figure A or Figure B.

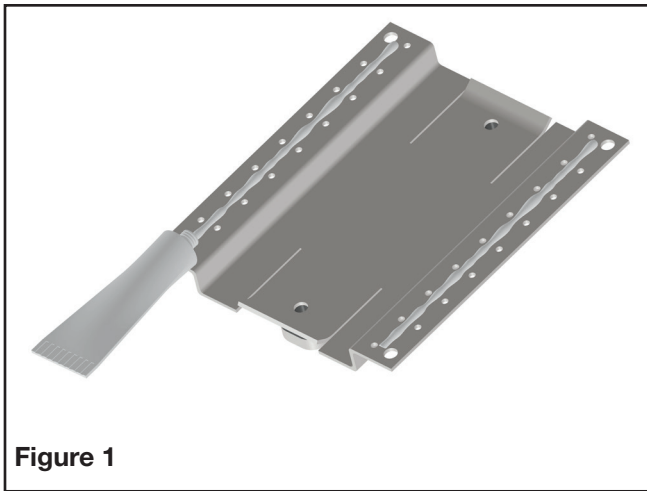


Figure 1

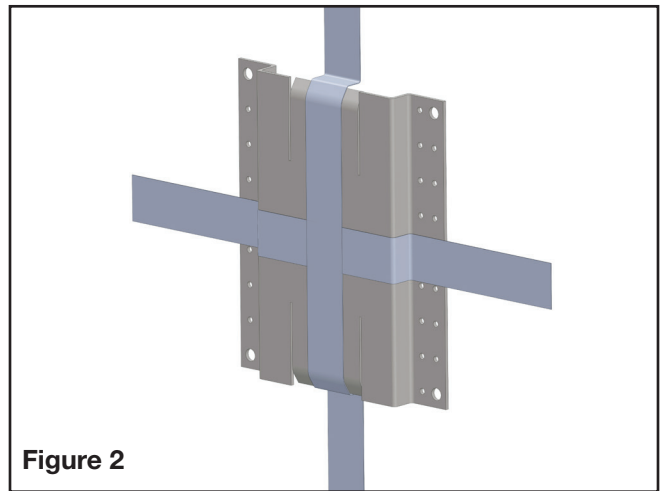


Figure 2

2. Apply silicone adhesive to the plate as shown. Use a liberal amount of the adhesive and spread it evenly over the surface. Orient the mounting plate per step 1 and the kit as shown in step 3. Place the plate onto the surface and push down so the adhesive flows through the holes on each side of the plate. Leave excess adhesive for a proper adherence to the surface. Secure the mounting plate to the surface using the glass tape provided as shown in the picture above and allow a minimum of 24 hours for curing. **Note: At lower temperatures curing may take longer than 24 hrs.**

3. See figures below for specific installation of different kits (U Series, DL Series, HL, Series, and MI Series).

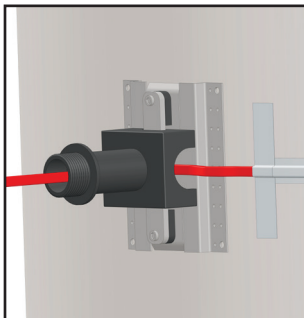


Figure 4

U Series Installation

For U series Pipe stand-off use item numbers 2, 3, and 4 as shown to secure the stand-off to the mounting plate.

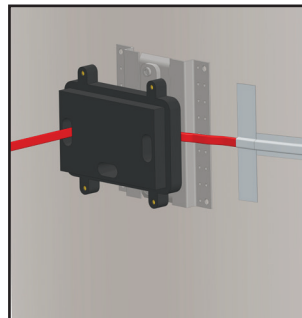


Figure 5

DL Series Installation

For DL series Pipe stand-off use item numbers 2, 3, 8, and 9 as shown to secure the stand-off to the mounting plate.

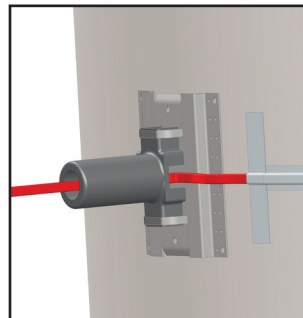


Figure 6

HL Series Installation

For HL series Pipe stand-off use item number 6 as shown to secure the stand-off to the mounting plate and trim straps using cutters as needed. Straps should be mounted through slots in the bracket.

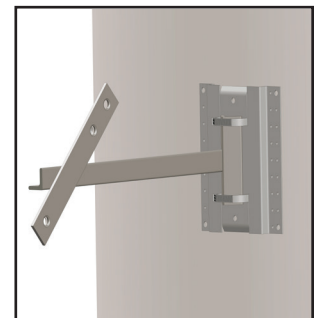


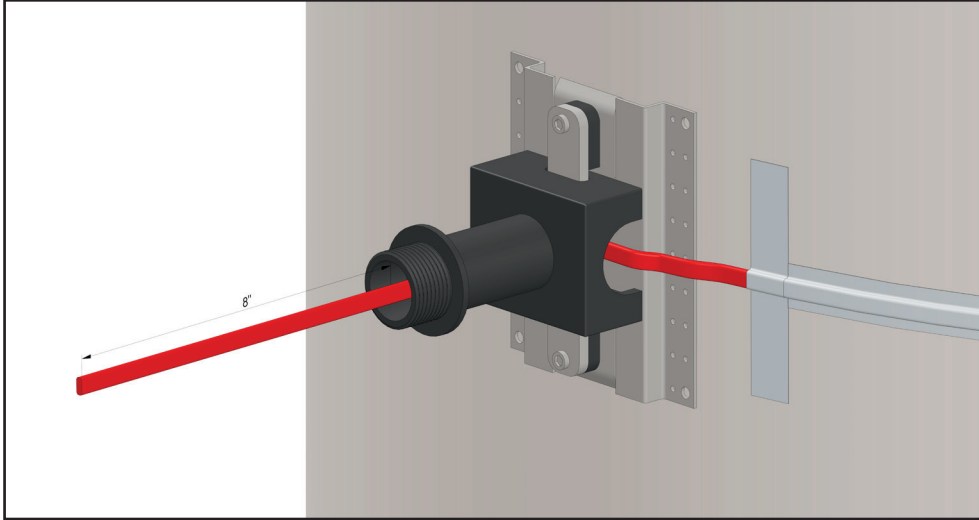
Figure 7

MI Series Installation

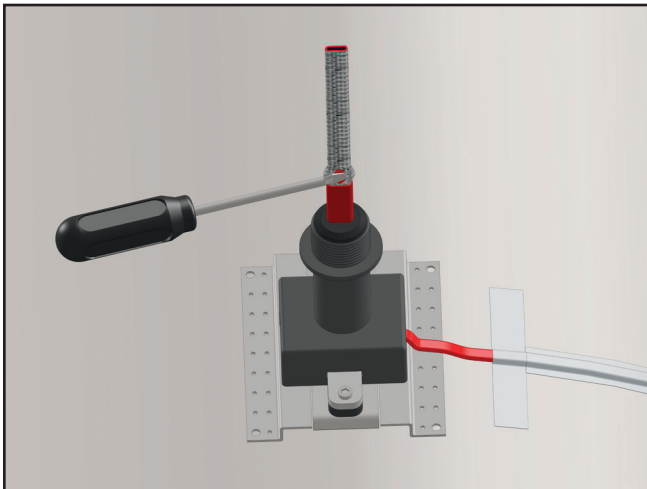
For MI series Pipe stand-off use item number 6 as shown to secure the stand-off to the mounting plate and trim straps using cutters as needed. Straps should be mounted through slots in the bracket.

4. **U Series cable preparation instructions used as an example.** For cable prep instructions for all other Series standoffs please refer to the proper kit instruction sheets.

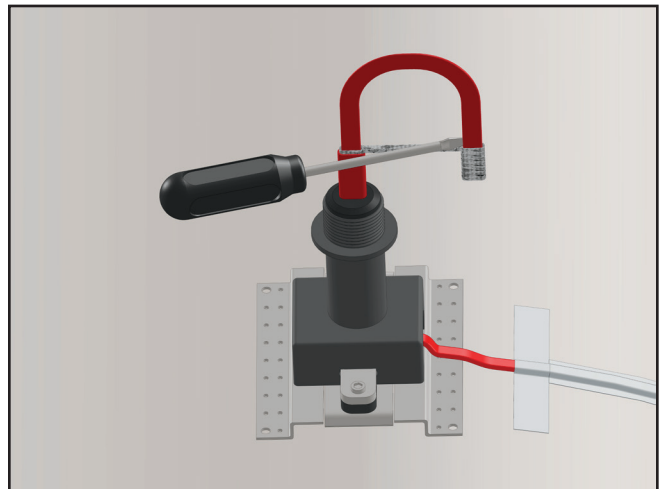
Insert cable through pipe standoff and grommet as shown. 8" of heating cable should extend beyond the grommet.



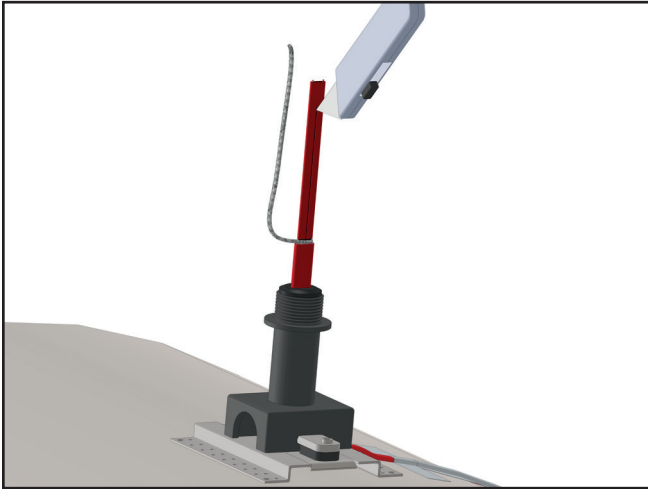
5. Move braid back toward the overjacket, creating a bulge. At the bulge, separate the braid to make an opening.



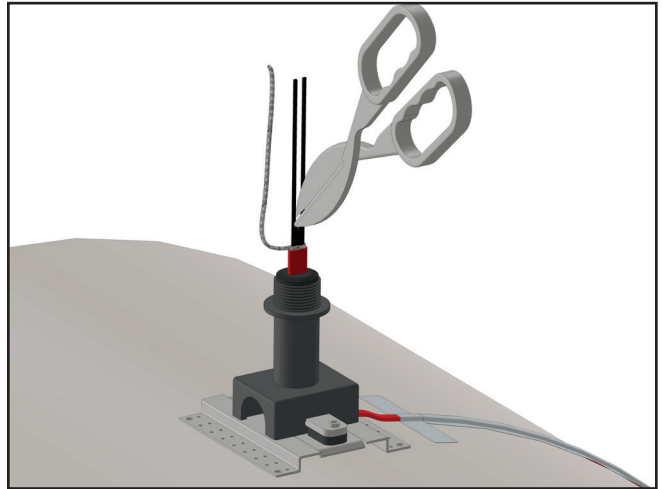
6. While bending the heating cable, work the cable through the braid opening. Pull the braid tight.



7. Score the inner insulation 6 inches from the end. Lightly cut the inner jacket up the center to end of heating cable and remove the inner jacket from the cable.



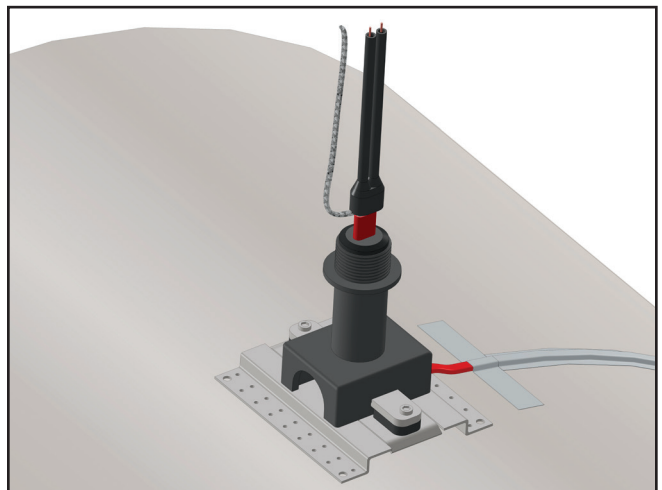
8. Use Tin Snips or similar tool to cut excess matrix material from between the two buss wires.
*Separate CWM leads



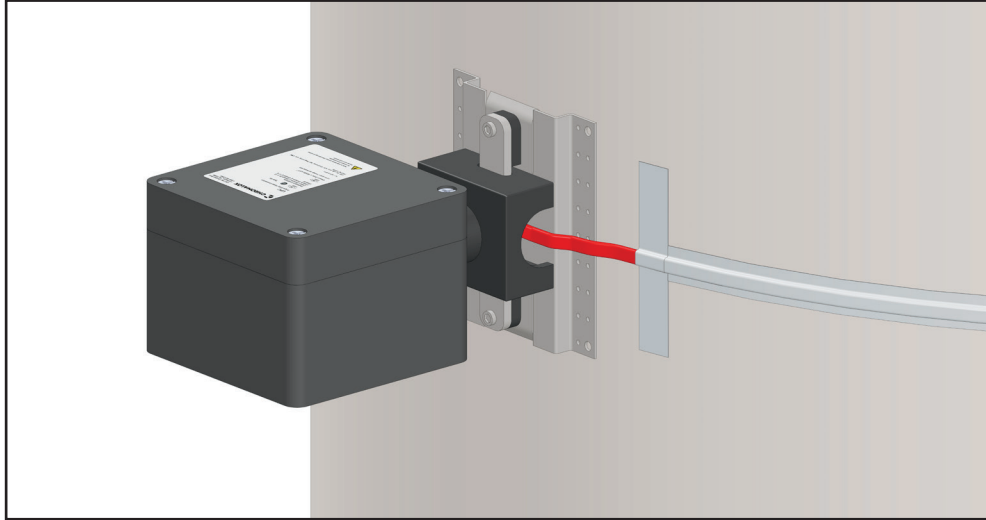
9. Liberally apply RTV over the exposed matrix and leads. Push the rubber boot over the heating cable.



10. Strip each buss wire so that no black matrix material shows above the end of the rubber boot. Trim lead ends as needed.



11. Complete connection kit assembly per the proper kit assembly instructions.



Limited Warranty:

Please refer to the Chromalox limited warranty applicable to this product at <http://www.chromalox.com/customer-service/policies/termsofsale.aspx>.

Chromalox
103 Gamma Drive
Pittsburgh, PA 15238
(412) 967-3800
www.chromalox.com