

## Installation Instructions

# RG-SK-1 Roof and Gutter Cable Splice Kit

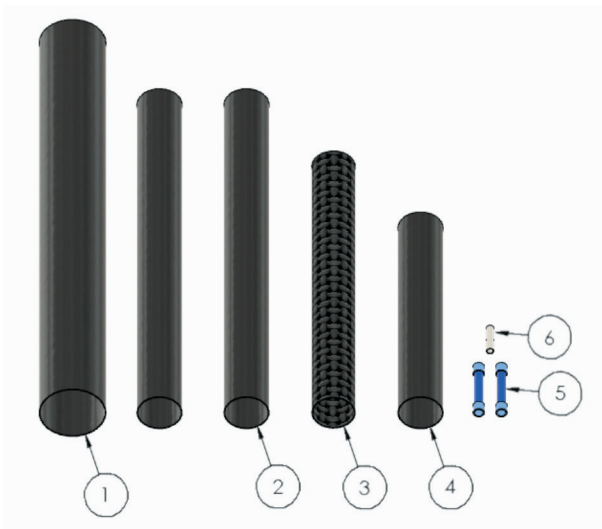
For Self-Regulating Heating Cables



PJ479-4  
161-511930-003  
April, 2021

# RG-SK-1 Roof and Gutter Splice Kit

## Self-Regulating Heating Cable Installation Instructions



Item	Qty	Description
1	1	6" Long Heat Shrink Tube
2	2	5" Long Heat Shrink Tube
3	1	4" Long Woven Braid
4	1	3" Long Heat Shrink Tube
5	2	Insulated Barrel Connector
6	1	Uninsulated Barrel Connector

### General

The RG-SK-1 kit is used to make splice connections for braided self-regulating cables in ordinary locations. Consult factory for installation in hazardous locations. Check the kit label to ensure you have the proper kit for the cable you are installing. This kit contains enough parts to make one splice connection.

### Installation

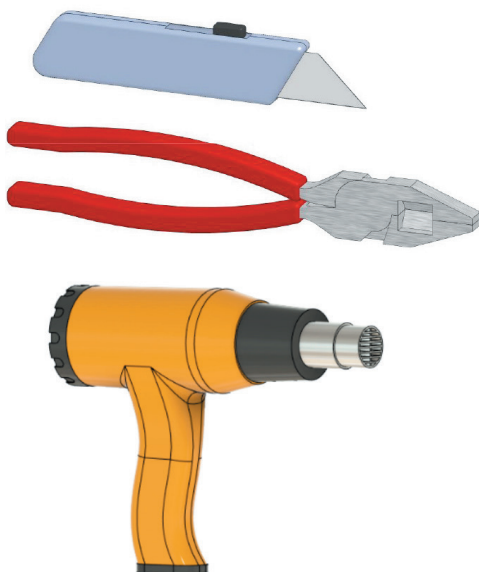
The minimum installation temperature for this kit is 0°F (-18°C).

### Certifications & Approvals

Ordinary Locations



### Tools Required for Kit Installation



### Order Separately

#### Pipe Straps

- Pipe Strap: 1/2" to 3/4" pipes
- Pipe Strap: 1" to 3-1/2" pipes
- Pipe Strap: 2-1/2" to 9" pipes
- Pipe Strap: 9" to 19.5" pipes



#### Caution Label & Fiberglass Tape



**⚠ WARNING**

**HAZARD OF ELECTRIC SHOCK.** *Disconnect all power before opening. All installations must be effectively grounded in accordance with the National Electrical Code to eliminate shock hazard. To avoid electro-static discharge, wipe with damp cloth.*

**⚠ WARNING**

**ELECTRIC SHOCK HAZARD.** *Any installation involving electric heating cables must be performed by a qualified person.*

**⚠ WARNING**

**FIRE/EXPLOSION HAZARD.** *During installation, do not utilize a propane torch or heat gun in a hazardous area.*

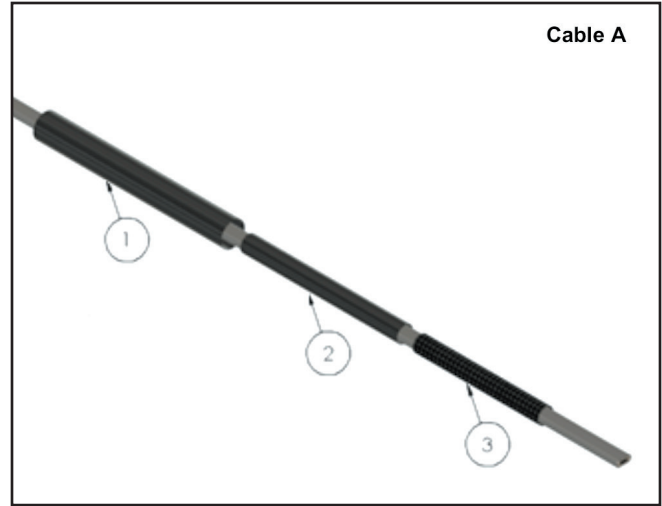
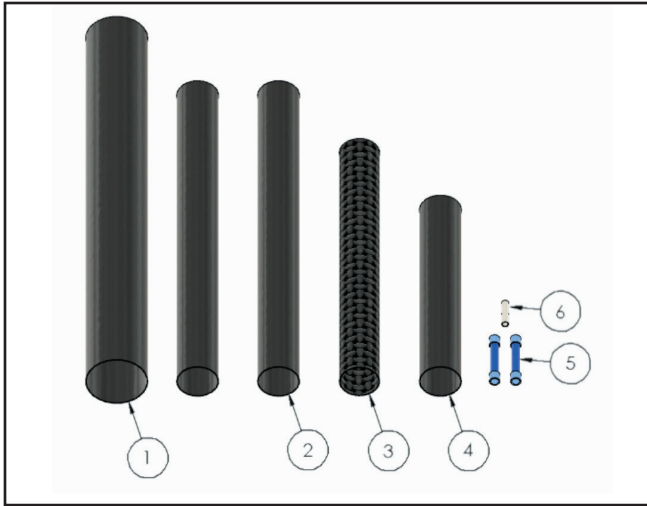
**⚠ WARNING**

**ELECTRICAL HAZARD.** *Never connect the two parallel conductors of the heating cable together. This will result in an electrical short circuit.*

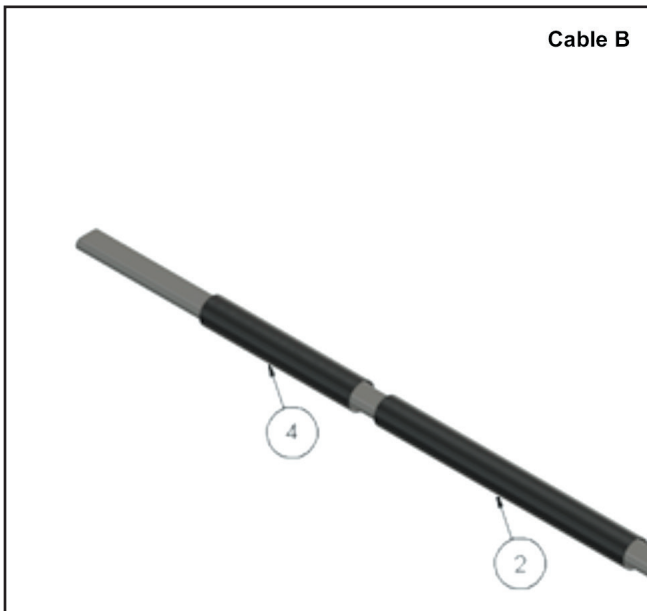
**⚠ WARNING**

*Users should install adequate controls and safety devices with their electric heating equipment. Where the consequences of failure may be severe, back-up controls are essential. Although the safety of the installation is responsibility of the user, Chromalox will be glad to assist in making equipment recommendations.*

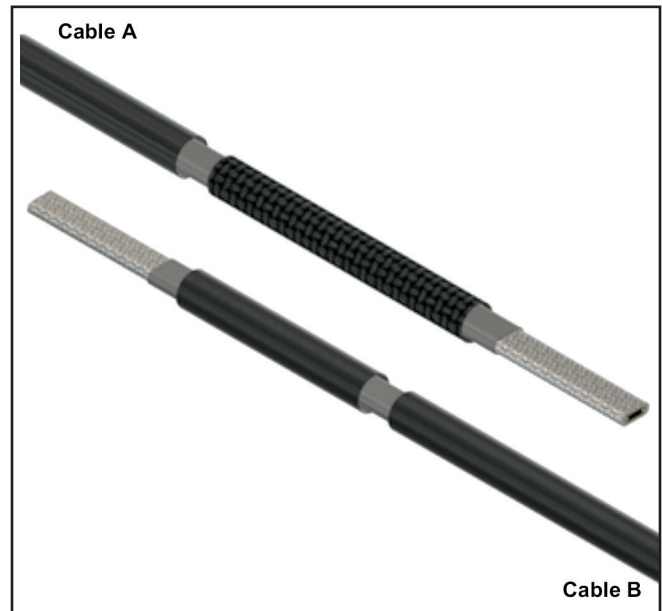
## Cable installation instructions: CPR, SRL



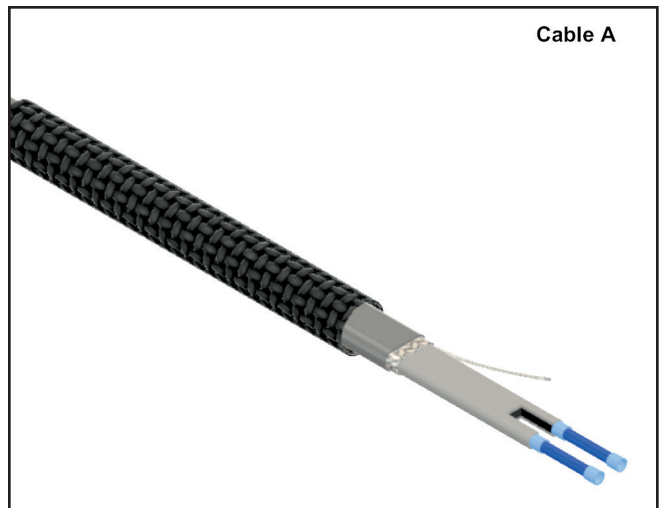
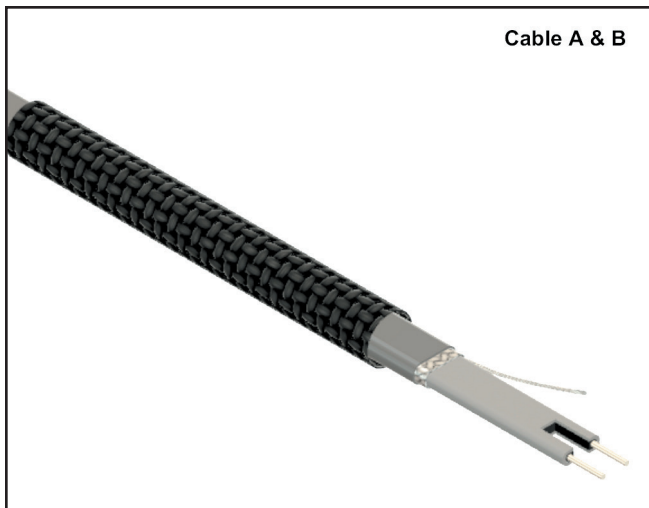
1. Slide the splice kit parts onto Cable A in the following order: 6" heat shrink tube (Item 1), 5" heat shrink tube (Item 2), 4" woven braid (Item 3).



2. Slide the splice kit parts onto Cable B in the following order: 5" heat shrink tube (Item 2), 3" shrink tube (Item 4).

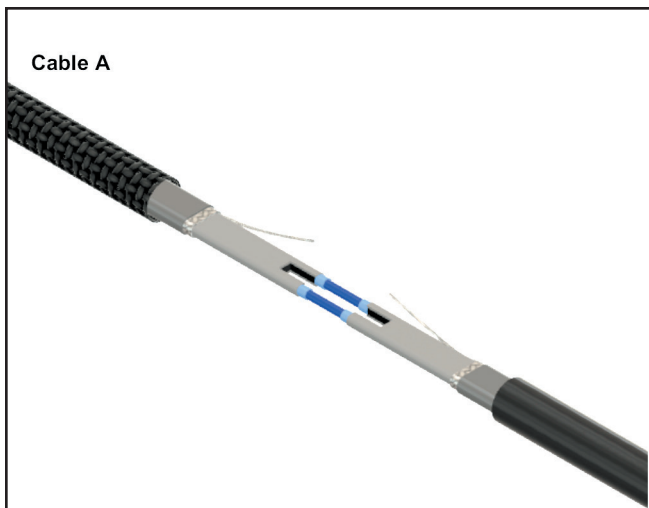


3. Score the outer jacket 2" from the end of both cables. Remove the jacket to expose the braid.



4. For both cables, pick the braid apart near the outer jacket and pull the cable through the opening in the braid. Twist the braid into a pigtail. Using standard electrical cutters, cut a 3/4" long notch out of both cables, between the two conductor wires. Bare a 3/8" length of each conductor by stripping off the outside insulation and the inner black core material.

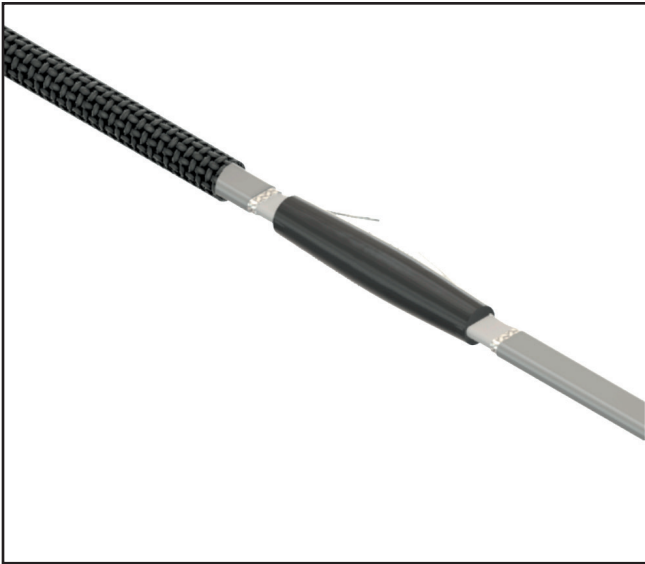
5. Slide one end of each of the two blue insulated barrel connectors over the bare conductors on Cable A. Crimp on with a crimping tool.



6. Insert the bared ends of the conductors of Cable B into the uncrimped ends of the insulated barrel connectors. Crimp on.



7. Center the 3" long heat shrink tube (Item 4) over the insulated barrel connectors, being careful to keep the pigtails out from under the shrink tube.



8. Apply heat evenly until the tube shrinks down around the cables and connectors. The adhesive should flow from both ends. Allow the tubing and adhesive to cool before going to the next step.

**CAUTION: Do not overheat the tube or cable. Always keep the heat source moving.**



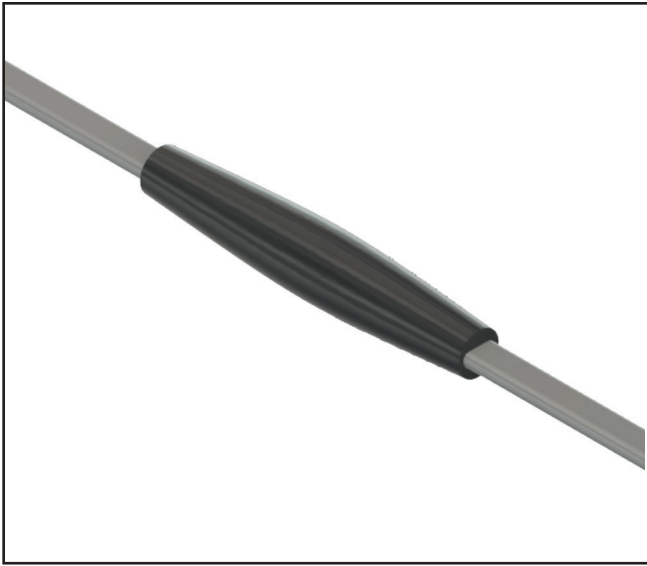
9. Insert the braid pigtail of one cable into one end of the uninsulated (silver) barrel connector and crimp it on. Insert the braid pigtail of the other connector end and crimp it on.



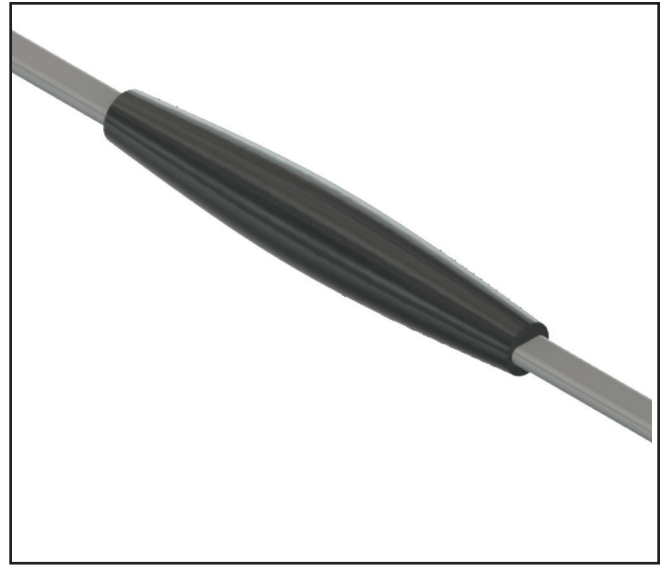
10. Push the braid splice against the insulated cable splice. Center the 5" heat shrink tube (Item 2) over the braid splice/cable splice. Apply heat evenly until the tube shrinks down around the connection. Allow to cool.



11. Center the 4" woven braid sleeving (Item 3) over the splice connection.



**12.** Center the 5" long heat shrink tube (Item 4) over the woven sleeving. Apply heat evenly until the tube shrinks. Allow to cool.



**13.** Center the 6" heat shrink tube (Item 1) over the splice connection. Apply heat evenly until the tube shrinks down around the cables and the adhesive melts. While the tubing is still hot, gently squeeze each end of the tubing with pliers and hold until cool. Each end must remain visibly sealed when the pliers are removed. If the tube does not remain sealed reapply heat and squeeze again with pliers.

**Limited Warranty:**

Please refer to the Chromalox limited warranty applicable to this product at  
<http://www.chromalox.com/customer-service/policies/termsofsale.aspx>.

**Chromalox, Inc.**  
**1347 Heil Quaker Boulevard**  
**Lavergne, TN 37086**  
**(615) 793-3900**  
**[www.chromalox.com](http://www.chromalox.com)**