

Installation Instructions

RG-PK-1 Roof and Gutter Power Connection Kit

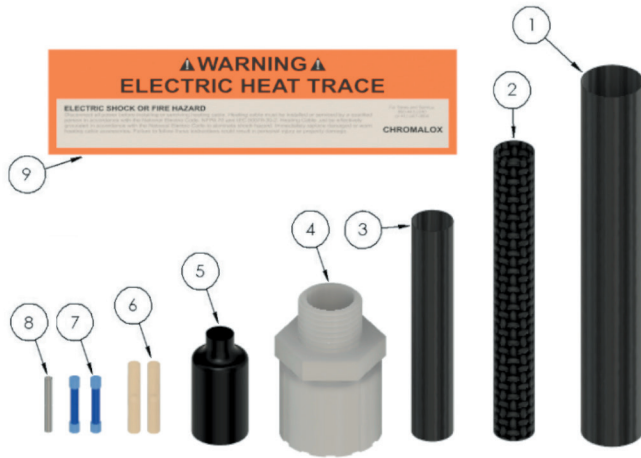
For Self-Regulating Heating Cables



PJ478-4
161-511930-002
April, 2021

RG-PK-1 Roof and Gutter Power Connection Kit

Self-Regulating Heating Cable Installation Instructions



Item	Qty	Description
1	1	5" Long Heat Shrink Tube
2	1	4" Long Woven Braid
3	1	3" Long Heat Shrink Tube
4	1	1/2" NPT Compression Cable Connector Assembly
5	1	Heat Shrink End Cap
6	2	Insulated Barrel Connector, 10-12 AWG Wire
7	2	Insulated Barrel Connector, 14 AWG Wire
8	1	Uninsulated Barrel Connector
9	2	Caution Label

General

The RG-EK-1 kit is used to terminate self-regulating cables in ordinary locations. Consult factory for installation in hazardous locations. Check the kit label to ensure you have the proper kit for the cable you are installing. This kit contains enough parts to make one end seal.

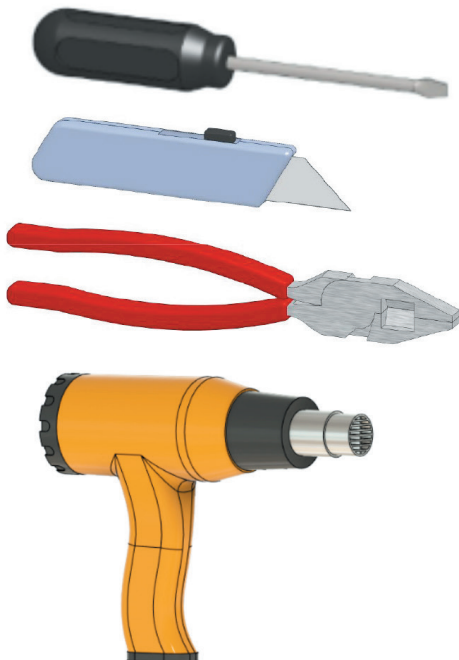
Installation

The minimum installation temperature for this kit is 0°F (-18°C).

Certifications & Approvals



Tools Required for Kit Installation



Order Separately

Pipe Straps

- Pipe Strap: 1/2" to 3/4" pipes
- Pipe Strap: 1" to 3-1/2" pipes
- Pipe Strap: 2-1/2" to 9" pipes
- Pipe Strap: 9" to 19.5" pipes



Caution Label, Fiberglass Tape, Junction Box



⚠ WARNING

HAZARD OF ELECTRIC SHOCK. *Disconnect all power before opening. All installations must be effectively grounded in accordance with the National Electrical Code to eliminate shock hazard. To avoid electro-static discharge, wipe with damp cloth.*

⚠ WARNING

ELECTRIC SHOCK HAZARD. *Any installation involving electric heating cables must be performed by a qualified person.*

⚠ WARNING

FIRE/EXPLOSION HAZARD. *During installation, do not utilize a propane torch or heat gun in a hazardous area.*

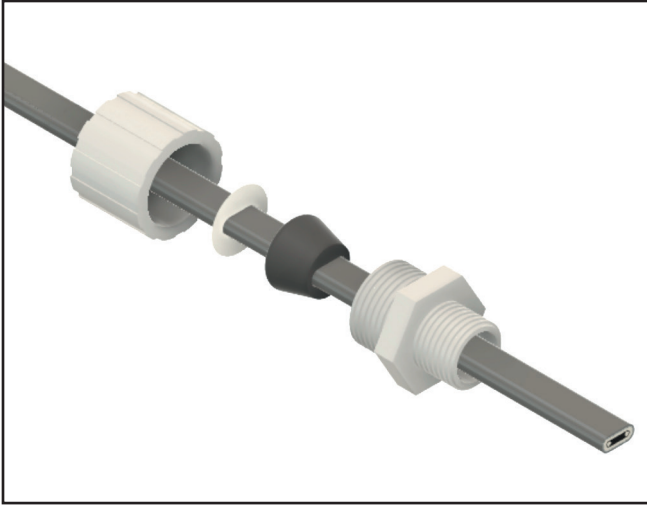
⚠ WARNING

ELECTRICAL HAZARD. *Never connect the two parallel conductors of the heating cable together. This will result in an electrical short circuit.*

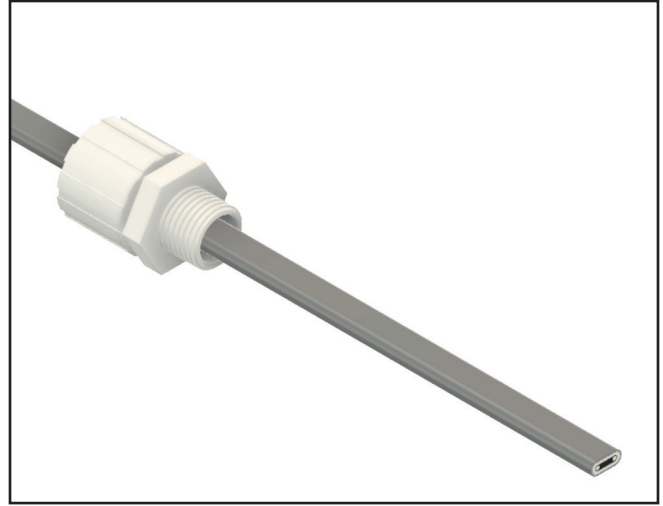
⚠ WARNING

Users should install adequate controls and safety devices with their electric heating equipment. Where the consequences of failure may be severe, back-up controls are essential. Although the safety of the installation is responsibility of the user, Chromalox will be glad to assist in making equipment recommendations.

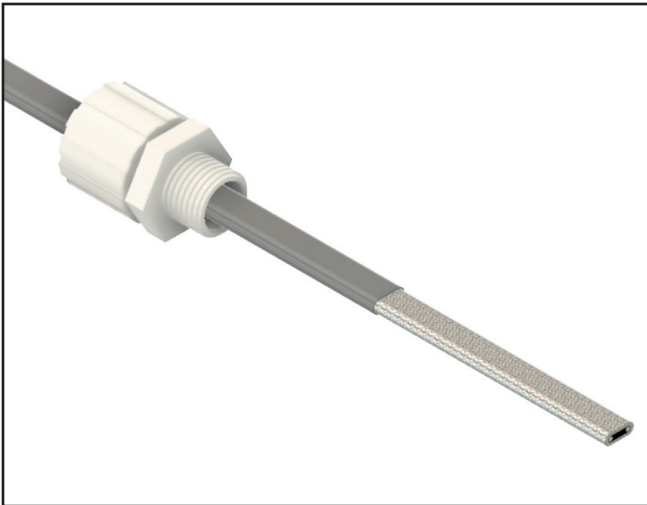
Cable installation instructions: CPR, SRL



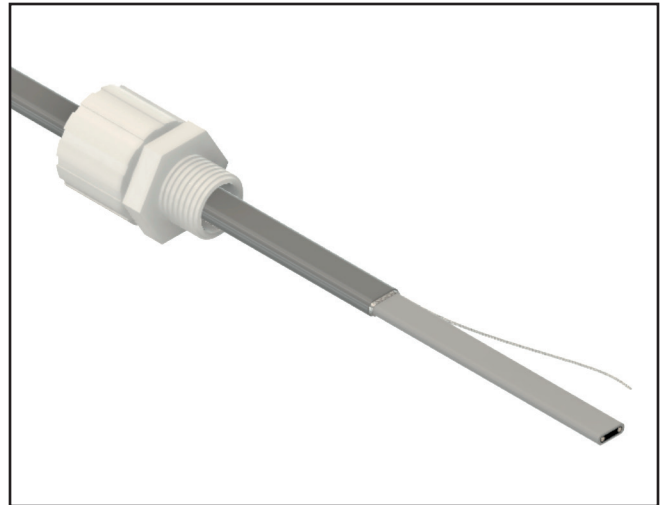
1. Slide the four (4) components of the NPT cable connector onto the heating cable in the order shown.



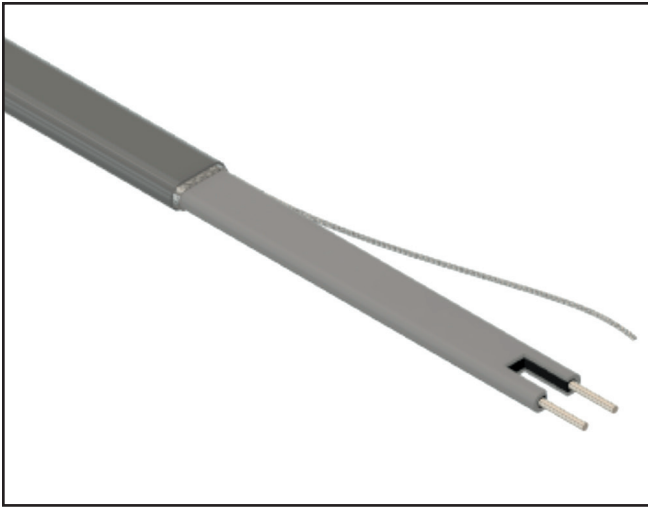
2. Assemble the connector and tighten, leaving 6" of cable extending through the connector.



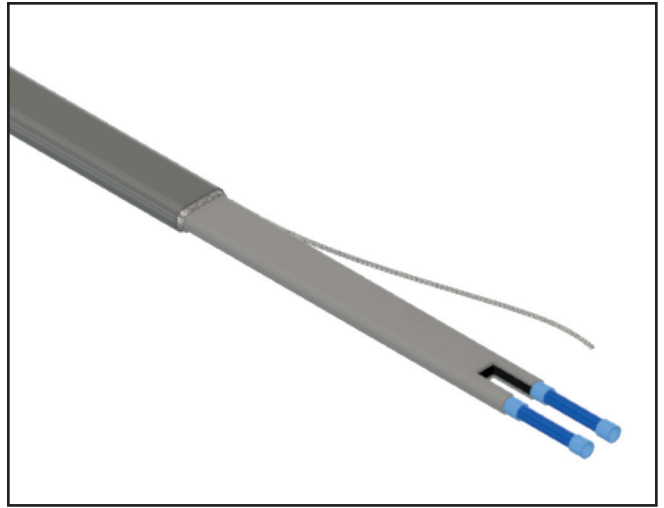
3. Score the cable outer jacket 3 1/2" from the cable end, being careful not to damage the braid or the base cable insulation. Remove the jacket to expose the braid.



4. Pick the braid apart near the outer jacket and pull the cable through the opening in the braid. Twist the braid into a pigtail.

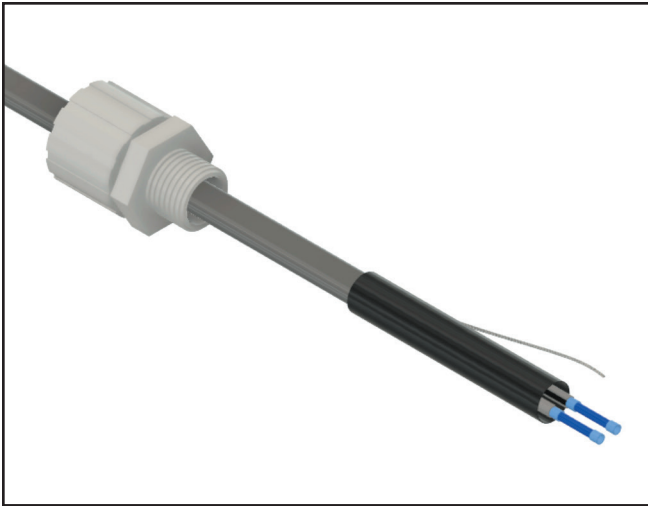


5. Using standard electrical cutters, cut a 3/4" long notch out of the cable, between the two conductor wires. Bare a 3/8" length of each conductor by stripping off the outside insulation and the inner black core material.

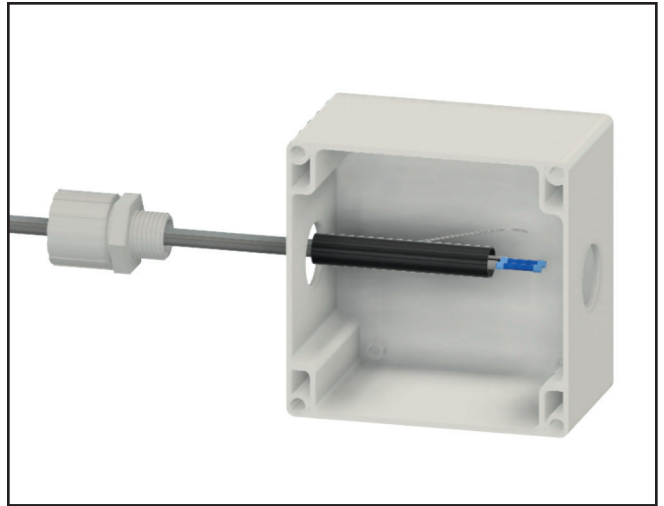


6. Slide one end of each of the two insulated barrel connectors over the bare portion of the conductors. Crimp the barrel connectors on using a crimping tool.

NOTE: Be sure to choose the correct insulated barrel connector based on incoming power lead wire size.

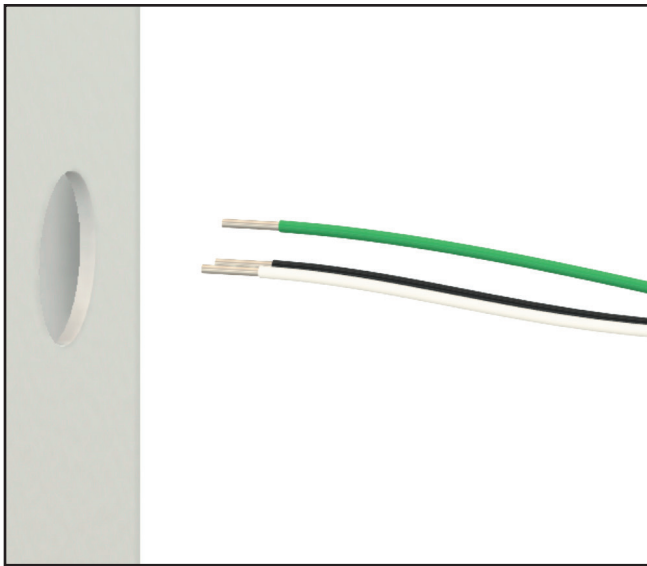


7. Slide the 3" long heat shrink tube over and past the barrel connectors, but **do not shrink the tube**.

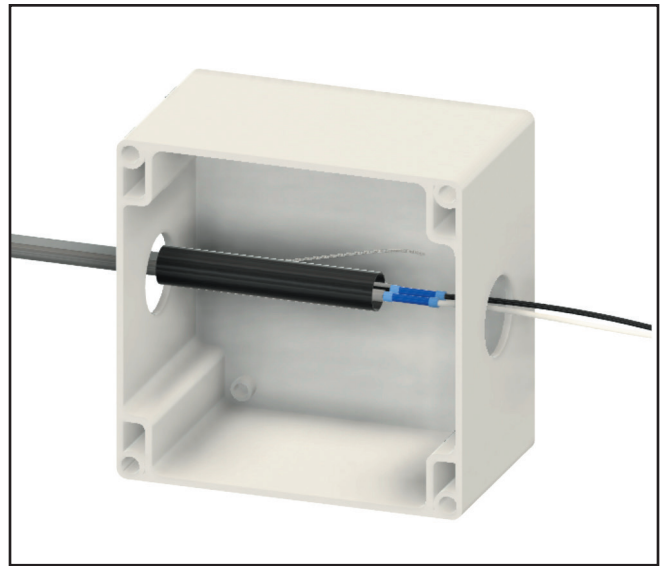


8. Insert the entire assembly into a NEMA 4 or 4X Electrical Junction Box (purchased separately).

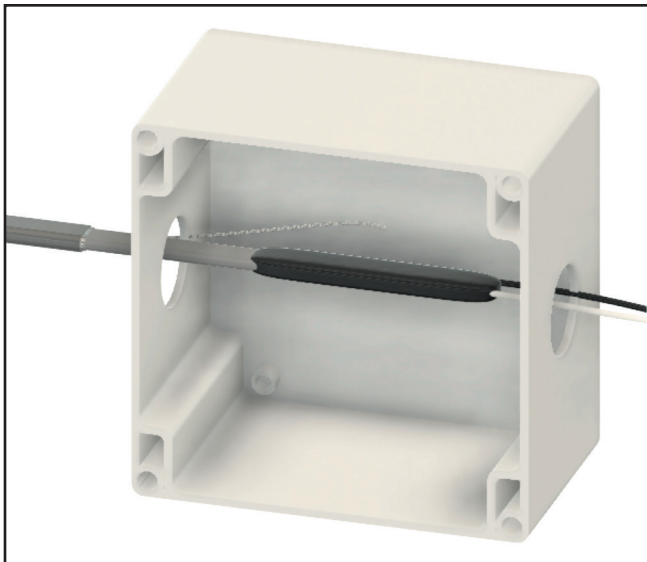
NOTE: Junction box should be protected from weather if possible.



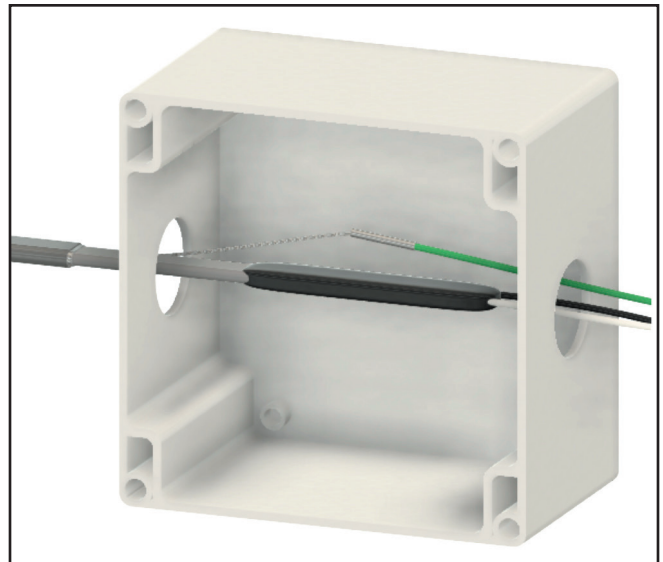
9. Strip the incoming power leads and ground wire to expose a 3/8" length of bare conductor.



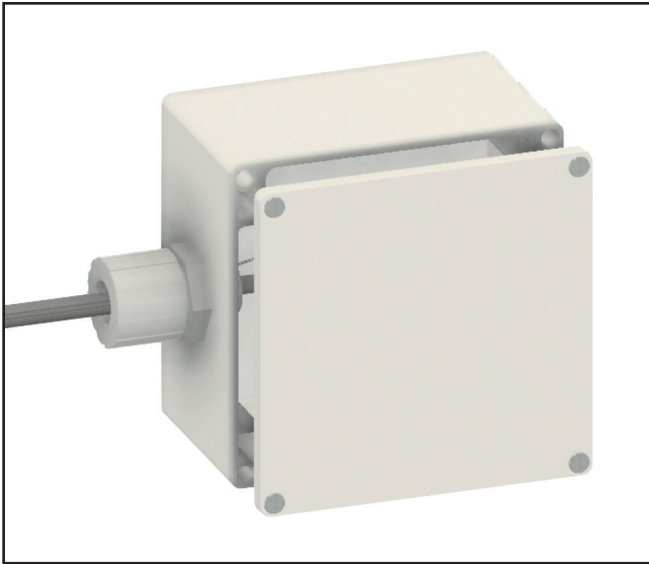
10. Insert the bared portion of the power leads into the other end of the insulated barrel connectors and crimp them.



11. Center the 3" long heat shrink tube over the connection. Apply heat evenly to shrink tubing around the heating cable, barrel connectors and power leads. While the shrink tubing is still hot, gently squeeze the shrink tubing between the power leads with needle-nose pliers and hold until cool. The shrink tubing must remain visibly sealed when the pliers are removed. If the tubing does not remain sealed, reheat the tubing and try again



12. Insert the end of the braided pigtail into one end of the uninsulated (silver) barrel connector and crimp it. Insert the stripped end of the ground wire into the other end of the barrel connector and crimp it.



13. Carefully push the connected wires into the power termination box and secure the cover. Screw the 1/2" compression cable connector into the power termination box to form a water-tight seal.



14. See the enclosed RG-EK-1 Installation Instructions (PJ480) for information on how to install the end seal.

Limited Warranty:

Please refer to the Chromalox limited warranty applicable to this product at
<http://www.chromalox.com/customer-service/policies/termsofsale.aspx>.

Chromalox, Inc.
1347 Heil Quaker Boulevard
Lavergne, TN 37086
(615) 793-3900
www.chromalox.com